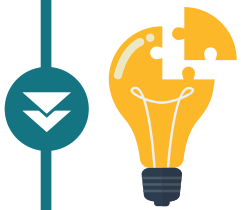


Tackling Anti-Social Behaviour (ASB) across the West Midlands



10 Point plan



Better our Understanding

We will engage with you to better understand what ASB is, where it is and how it makes you feel.



Work in Partnership

We will work in partnership to collectively prevent and reduce ASB.



ASB Risk Assessment

We will recognise and support vulnerable and repeat victims.



Use a Problem-solving Approach

We will take a problem-solving approach. We won't just fix it for now but for the future.



Be Visible and Accessible

We will be visible and accessible in the places you need us - especially on our high streets and town centres.



Use Available Powers

We will use all available powers open to police and partners to tackle offenders and protect our communities.



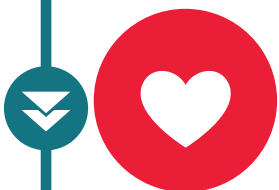
Continue to Learn

We will take every opportunity to learn from past cases, understand new behaviours and establish best practice.



Take a Public Health Approach

We will take a public health approach to tackle the root causes of ASB.



Put Victims at the Heart of Activity

We will put victims at the heart of our approach and ensure they are protected and their voices are heard.



Communicate and Listen

We will keep you updated on all our activity in a clear and meaningful way and get your feedback on how we perform.

Please [click here](#) to view the 10 points of the ASB Plan in more detail.