



Leicestershire
Police
Protecting our communities

Rutland North Newsletter #yousaidwedid

Issue: June 2025 edition



Welcome to your monthly newsletter!

Focusing on the priorities that you want your local policing team to deal with



Your Dedicated Neighbourhood Team (from left to right):
PCSO 6557 Lauren Lyall, PS 4114 Liam Palmer, PC 1049 Jake Spruce

What matters to you

We have listened to you and the concerns you have raised through surveys, community consultations and analysing crime trends. Using this data, we have created the following Rutland North priorities that the Dedicated Neighbourhood Team will focus their efforts on:

Priority 1: Road Safety.

You said: Speeding vehicles on Rutland roads is a priority you want us to address, specifically the lack of adherence to 30mph zones.

What we are going to do: We will provide a frequent high visibility policing presence to the affected areas with marked vehicle patrols and regular monitoring. We will deploy the speed gun device and deal with offenders robustly where appropriate. We will also continue to work with partner agencies, such as the Road Safety Partnership mobile speed camera van, to identify areas of concern and request deployment of that resource. We will then continue to publish the enforcement statistics on the Neighbourhood Link messaging service.

Priority 2: Vehicle Crime.

You Said: Vehicles being broken into, items being stolen and damage caused to vehicles is a concern to you.

What we are going to do: Develop our intelligence picture around those who commit this type of crime so we that we can effectively target our resources in the right areas, at the right time, with the aim of deterring, disrupting and bringing offenders to justice.

Priority 3: Rural Crime.

You said: Reports of criminals stealing plant equipment and machinery from farms and building sites, as well as hare coursing and sheep worrying is a concern to you.

What we are going to do: Working closely with the Rural Policing Team, proactively patrol at all times of day and night. Robustly deal with offenders. Visit victims of crime and provide target hardening advice. Make efforts to locate and reunite stolen equipment. Respond to reports of hare coursing in progress on immediate responses and deal robustly with offenders. Deal with offenders of sheep worrying and out of control dogs, as well as educate the wider community on the issue through our Neighbourhood Link and Social Media channels.

What we have done #yousaidwedid

The Quarterly Priorities are soon to be reviewed and set again in July, if you haven't already please have your say and complete the survey:

[Your Views Priority Survey](#)

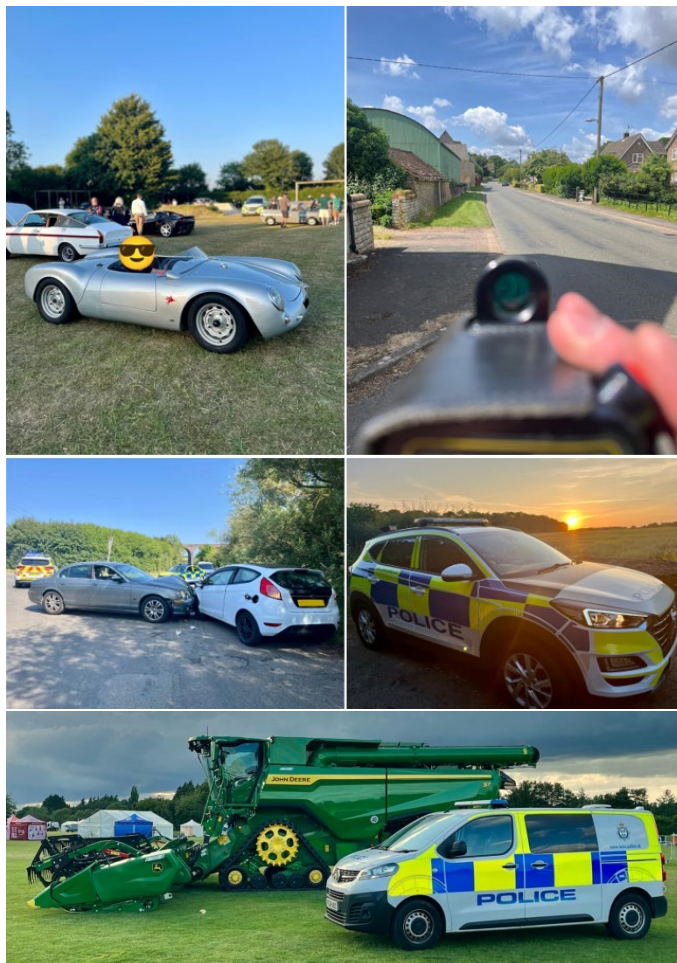
PC Jake Spruce and PCSO Lauren Lyall have both been extremely busy over the past month. As we enter Summer, we enter what is usually our busiest time of year. PC Spruce has therefore been assisting response officers a lot with emergency responses to many different types of incidents, travelling nearly 200 miles in one shift, mostly on blue lights (that was a busy one!). As well as, progressing our ongoing case load of investigations and tackling the priorities that you want us to deal with. Things of note to mention are –

It has been an enormously valuable month full of worthwhile community engagement. The team have attended multiple events, meetings, and school inputs providing in total, hours of face to face accessible contact. PC Spruce has also assisted in the arrest made by Uppingham Beat Officer PC George of a male for Possession with Intent to supply class A controlled drugs, stopped proactively whilst out on patrol. As well as, assisting with searches of missing persons, visiting vulnerable persons in the community and completing safeguarding referrals to partner agencies, taking crime reports and visiting victims of crime face to face.

In relation to road safety – Operation Numbers is still in full swing, with Dedicated Neighbourhood PCSOs and PCs enforcing at multiple locations all over Rutland. Specifically, on the Rutland North this month it was the turn of Little Casterton. Further to this, PC Spruce has been attending Road Traffic Collisions in Rutland, on the beat and further afield, investigating the circumstances and dealing with any identified offences.

In relation to vehicle crime – PC Spruce attended the Greetham Gathering this month. A fantastic community engagement opportunity, that is very well attended, where the local community could meet me, discuss concerns and issues face to face and receive advice. Thank you to those who spoke with me.

In relation to rural crime – The latest NFU mutual report has now been released about the cost of rural crime based on claims data. After Scotland - the Midlands Region has seen the largest percentage reduction in claims (31% reduction) and Leicestershire itself is down 35%. This mirrors the decrease we have seen in reported rural and wildlife crime. Currently we are approximately 20% down in total compared to last year. Melton and Rutland down by 39% compared to 2022. Also, your entire Rutland North beat team, as well as the Rural Policing Team attended The Rutland County Show this month. This was another hugely valuable community engagement opportunity with the rural community, answering local policing related concerns face to face.



Crime and Policing Report – 30 day crime report, 21/05/2025 to 20/06/2025

Crime figures stretch over two calendar months, but still a 30 day period.

VEHICLE CRIME

A1 – Fuel syphoned from HGVs overnight on four occasions.

ASHWELL – Theft of front number plate from car.

COTTESMORE – Theft of Ford Transit van, 10-day time period.

BARNSDALE – Theft of Land Rover Discovery, no key used.

OTHER

MARKET OVERTON – 30 cannabis plants seized.

RURAL CRIME

BURLEY – Theft of tractor from farm, 6-week time period.

STRETTON – Multiple persons disturbed whilst tampering with a farm gate and then flee.

ESSENDINE – Cattle trailer stolen from farm overnight.

THEFT

LANGHAM – Theft of pedal cycle, 1-month time period.

Crime Trends and Prevention Advice

One thing to note is, crimes being reported in a timely manner. We appreciate that there may be reasons and circumstances that dictate how quickly you can report a crime to us, however the sooner we know, the sooner we can start the investigation and the more likely we will be able to identify lines of enquiry. The longer that time passes, we start to lose opportunities such as CCTV, making it more difficult to conduct those enquiries.

I am pleased to report that we have not seen any further burglaries this month, thank you if you have taken steps to improve your home security and help us with this. However, although regionally and across the Neighbourhood Policing Area there has been a decrease in Rural Crime, unfortunately the beat area specifically has seen a slight increase this month with the incidents above. Please see Rural Crime Prevention Advice here - [NFU Mutual](#)

Community engagements Come along and meet the team!

Don't miss our upcoming events:

Saturday 5th July 2025 – Whissendine Village Fete – Whissendine Sports Club

Saturday 12th July 2025 – Ryhall Village Fete – Ryhall Meadows Playing Fields

Follow us & Contact info

Follow us on Facebook - [@Rutland Police](#)

Contact the team directly via email:

Email: PC 1049 Jake Spruce | Jake.Spruce1@leics.police.uk
Email: PCSO 6557 Lauren Lyall | Lauren.Lyall@leics.police.uk