

Warden Monthly Report

Southwater Parish Report for May 2026

Dangers of Swimming in Lakes

Hidden Danger
Water can hide many dangers like glass or rusty metal that has been dumped. It can also contain dirty rubbish that has been discarded by visitors.

Cold Shock
Outdoor swimming in cold water saps your body heat so your arms and legs get weaker and you could get into trouble

Blue-Green Algae
Swimming in it can trigger skin rashes, stomach upsets and sore eyes.

Weil's Disease (Leptospirosis)
Bacterial infection spread by animal urine, especially that of rats.

Tummy Bugs From Sewage In Streams, Rivers And Lakes
You can end up with diarrhoea and vomiting after swimming in waters containing sewage or any kind of animal or bird droppings.

Swimmer's Itch (Cercarial Dermatitis)
Itchy rash caused by certain parasites that live in freshwater snails that live on the reeds around marshy lakes and stagnant ponds.

We have been receiving numerous reports of people trespassing to swim in the lakes and ponds around Southwater which are unsafe. This happens every year because some people still do not respect the risks associated with this behaviour. As parents/carers of young people we would encourage you to have direct conversations and actively discourage anyone from ignoring warning signs. Stay safe – only swim in designated swimming areas.



Media has reported at least 15 water-related deaths in the UK during the recent heatwave

If you witness acts of violence, verbal abuse, drug taking, irresponsible alcohol use or damage to property please report it to Sussex Police via the methods below or anonymously to Crime Stoppers on 0800 555 111 or visit their website: <https://crimestoppers-uk.org/>

Patrol hours TOTAL:	123.75	ASB incidents reported to us TOTAL:	10
Foot (high visibility)	33.50	Noise	0
Vehicle	90.25	Neighbours	0
Notices/warnings TOTAL:	5	Driving/vehicles	0/6
Verbal Warning	3	Bicycles/E-scooters	0
Parking Alert	2	Alcohol/Drugs	1/0
Yellow card warning (ASB)	0	Other	3
Fixed Penalty Notice	0		
Community Protection Warning/Notice	0	Clear up/disposal reports TOTAL:	21
Police reports TOTAL:	31	Fly tipping / flyposting	5/0
In person	9	Graffiti	1
Phone (including 101 and 999)	13	Dog fouling	6
Email	7	Litter	5
Intelligence report	2	Drug litter	0
		Hazards	4
Media reports TOTAL:	2	Community events attended	5
Press release / Community magazines	1	School contact	6
Social Media Posts	1	Youth engagement	95
Vulnerable People Welfare Checks	12	Reports to DVLA	0
Signposting	11	Reports to Operation Crackdown/Sussex Police	0
Safeguarding referral	0	Admin	35

Anti-Social Behaviour

Through our partnership working, in particular with Sussex Police and the Neighbourhood Watch Association plus routine monitoring of crime reporting websites for information about suspicious activity, people and vehicles, we are able to understand and respond to emerging trends.

Anti-Social Behaviour

08/05 – A report was received regarding individuals fishing at the Quarry Lake which is a restricted area with no public access. We attended the lake, but the individuals had fled prior to our arrival.

09/05 – Sussex Police received a call in relation to people fishing at the Quarry Lake. We attended with PCSO Cecil however the individuals were no longer at the lake.

29/06 – We attended Southwater Country Park following reports of unauthorised fishing. Words of advice were issued to the individuals involved, who were subsequently instructed to leave the park.

Crime

07/05 – An intoxicated local adult resident committed retail theft but was challenged by the shop owner who successfully recovered the stolen goods. Later, the same individual then breached a banning order at a second retailer and was escorted off the premises following our intervention.

The suspect then verbally abused and attempted to assault a bus driver, before repeatedly kicking and headbutting a bus stop. The incident was reported to Sussex Police by the driver, but officers did not attend.

During the confrontation, the suspect walked into the road, forcing drivers to swerve and causing significant distress to passengers and onlookers. No injuries were reported. The suspect is widely known and, as his

behaviour grows increasingly erratic, we are working with partner agencies to secure an appropriate intervention.

Parking/vehicles

We continue to receive reports relating to the anti-social use of a vehicles particularly at school pick up and drop off times presenting a risk to children. We regularly patrol at these times and routinely try to gain the cooperation of parents some of whom positively engage having genuinely not seen the problems they are causing.

06/05 – A report was received regarding a vehicle parked on the highway that was suspected of being abandoned. Following local door-to-door enquiries, it was confirmed that the vehicle owner resides in the immediate vicinity.

20/05 – We received a report about a smashed-up vehicle with the wheels removed which was parked in a residential area causing a potential hazard. The matter was reported to HDC Environmental Health team for consideration and Sussex Police are also aware.

Although there is no restriction on how long a vehicle can be parked on a highway without being moved (if no Traffic Regulation Orders are in place), if you believe that the vehicle has been 'abandoned' you can report it. Make a note of the vehicle registration number, make, model and colour of the vehicle and the street name, town and the postcode where you saw it. You will need these details to make your reports.

Report abandoned vehicles here:

<https://www.horsham.gov.uk/report/abandoned-vehicles>

Obstructions of pavements can be reported to Sussex Police by visiting:

<https://www.sussex.police.uk/ro/report/asb/asb-v3/report-antisocial-behaviour/>

If you need to contact Horsham District Council for parking related issues, please check the website

<https://www.horsham.gov.uk/parking/report-a-parking-problem> or call the Customer Services on 01403 215100

For anti-social driving, please report to Operation Crackdown at:

<https://operationcrackdown.org/>

Fly tipping, littering & graffiti

- **Fly Tipping Reported**

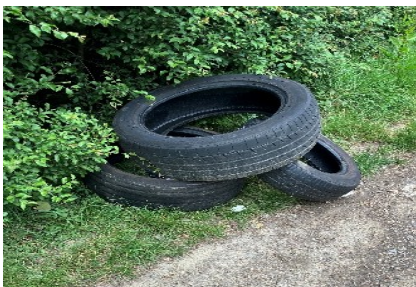
05/05 –one steam cleaner to Horsham District Council for collection from Camelot Close

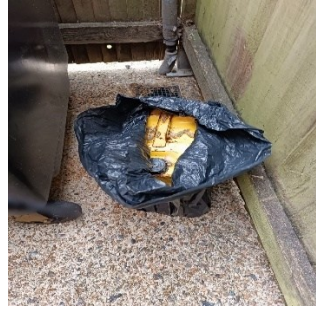
06/05 –two empty metal petrol cans found at Stakers Lane to Horsham District Council

22/05 –three tyres dumped in a layby on Weston's Hill

27/05 –two sun loungers dumped on Lackenhurst Lane

27/05 –six bags of rubble in a lay-by on Bar Lane





- **Fly Posting**

Nothing to report

- **Graffiti**

06/05 – Offensive graffiti on Cedar Drive was formally reported to Horsham District Council (HDC) and West Sussex County Council (WSSCC) to initiate prompt removal. Anyone who witnessed the offence is encouraged to report the matter to Sussex Police by calling 101.

- **Litter**

If you would like to collect litter in your local area at a time which suits you, Horsham District Council will support you with appropriate equipment through the **Adopt a Street** Scheme:

<https://www.horsham.gov.uk/waste-recycling-and-bins/litter-and-street-cleaning/adopt-a-street>

- **Drugs Litter**

We continue to monitor key areas within the parish to identify any ‘hot spots’. Incidents of drugs litter or paraphernalia remain at a consistently low level.

Community engagement & events

08/05 – Charmans Lodge

13/05 – Welcome Club in the Village Hall

15/05 – Charmans Lodge Coffee Afternoon

20/05 – Castlewood Primary School Careers Fair

28/05 – Southwater Annual Parish Community Meeting & Networking event

We were delighted to be invited to contribute to Castlewood’s Careers Fair where alongside many other exciting contributors, we set up a stand with leaflets, posters and a slideshow providing information about our role in the community. We ran multiple Q&A sessions with groups of pupils from Years 3 to Year 6.

“It was such a privilege to meet so many positive young people who were keen to engage, ask insightful and well thought out questions but also have a laugh and a joke. Yes, apparently the words Dog Poo - especially when on official Council paperwork is still funny.”

We asked the students to choose what they each thought was the most important part of our job and what we should be focusing on. This is what they told us:

FINDING MISSING PEOPLE	14
FIXING HAZARDS	13
HELPING EMERGENCY SERVICES	11
HELPING VULNERABLE PEOPLE	10



REPORTING DOG POO	10
WATCHING OUT FOR SUSPICIOUS PEOPLE	9
DOING FIRST AID	8
DEALING WITH ANTI-SOCIAL BEHAVIOUR	7
CLEARING LITTER	6
CLEARING GRAFFITI	6
DEALING WITH BAD PARKING	5
GIVING ADVICE	4
DELIVERING FOOD PARCELS	2

Encouraged by the delivery of a diverse curriculum at the school, we got to meet future athletes and footballers, fashion designers, computer programmers, teachers, beauty



technicians, emergency workers, tech entrepreneurs, carpenters, electricians and even an astronaut.

This was a fantastic event, and our thanks go to all the staff at **Castlewood Primary School** for organising this event and, of course, the young people for showcasing the emerging talent in our community. Well done!

Patrols

- We continue patrols of local businesses designed to disrupt shoplifting, ASB and improve engagement
- We continue to provide high visibility patrols both on foot and in a liveried vehicle throughout the Parish

Older, Vulnerable People and Youth

We routinely conduct high visibility patrols at times and in areas often used by older residents to offer a reassuring presence plus cover areas previously connected with ASB to act as a deterrent. By undertaking home visits to vulnerable residents, we were able to sign post support services.

06/05 – Following contact from a resident involved in a road traffic collision resulting in injury, a follow-up home visit was conducted to provide welfare support.

27/05 – We engaged with an elderly resident following an attempted doorstep scam. An unidentified male had attended the address, falsely claiming to be a utility company employee needing access to the drainage system. Acting alongside a supportive friend, the resident rightly deemed the encounter suspicious and verified the claim with the utility provider, who confirmed it was fraudulent. The suspect returned to the premises the next day but departed abruptly upon discovering the resident was not alone.

28/05 – We conducted a welfare check on a vulnerable resident following reports of a suspicious individual outside their property. The resident demonstrated excellent security awareness, remained vigilant, and declined to share any personal information with the uninvited visitor.

What are scammers and bogus callers?

Scammers and bogus callers attempt to cheat people out of their money. The most common types are:

- **Rogue traders** - People selling goods or services that are either not delivered or of very poor quality. A common tactic used is claiming they have noticed something that needs work or improvement on your property
- **Fake surveys** - Some scammers ask to conduct a survey so that they can obtain your personal details, or disguise their intent to eventually sell you something
- **Bogus officials** - People who pretend to be from a utility company to gain access to your home

Who may be particularly vulnerable?

- The elderly, who are more trusting and may be less suspicious of cold callers
- Those with a physical or learning disability
- Those with a long-term illness
- Those who regularly leave downstairs windows open or front/back doors unlocked
- Those who live in dark, quiet areas

How to protect yourself

Many legitimate businesses sell products door to door, and utility companies do sometimes require access to your property. Here are some tips to make sure you feel safe in your home and can spot a scam:

- If someone knocks at your door, always check their identification closely
- Never let anyone into your home unless you trust them
- Don't agree to any offer involving a significant amount of time or money in the moment. Seek independent advice or legal help first
- Set up passwords with your utility companies so that you have an extra way to confirm the caller's identity. Contact your utility company to do this
- Consider signing up to the Mailing Preference and Telephone Preference Services
- Consider installing motion sensor lights and a spy hole to your front door
- Consider putting a 'No cold callers' sign up near your front door (see example sign below that you can print and use)
- Before you open the front door, check your back door is closed and locked

How to report a scammer or bogus caller

If you are in immediate danger, call the Police on **999**.

To report an incident, call **101**. This is the Police non-emergency number. You can also **report a non-emergency crime online**: <https://www.police.uk/pu/contact-the-police/report-a-crime-incident/>



Dog related issues

If you find a dog roaming free and not being supervised, please report it to our kennels on **07512 089777**.

If you have lost your dog, please report it to Horsham District Council on 01403 215641 (office hours) or email ehl@horsham.gov.uk

For further information, please refer to <https://www.horsham.gov.uk/environmental-health/stray-dogs>

As with any other incident involving an immediate threat to human or animal life, please call 999.

Parish specific/other

Public enquiries

This month we responded to **25 enquiries** from residents by phone, email or in person and where necessary, signposted them to the most appropriate support services. These enquiries included topics such as neighbour disputes, unauthorized fishing and assisting a vulnerable person who had been released from hospital without any help at home.

Hazards

08/05 - During a routine patrol, an insecure window was discovered on a commercial building. The business owner was contacted and subsequently attended the site to secure the premises.

09/08 - We found an insecure Pumping Station. We contacted Southern Water who subsequently arranged for the area to be secured.

12/05 - We found broken bricks obstructing the Hop Oast roundabout. Following a 999 call, we collaborated with Sussex Police to clear the carriageway of debris. The obstruction was successfully removed, restoring the road to a safe condition for all users.



13/05 - During a routine patrol of a rural area, an insecure vehicle was discovered. We successfully located the owner, who subsequently attended the scene to secure the vehicle.

20/05 - We were called by concerned residents because the local bus could not easily access Shipley Road from Foxfield Cottages due to a large articulated lorry delivering a cherry picker for tree works. Highways were on scene and set up traffic lights to manage the situation.

Training

Nothing to report

Meetings

12/05 – A meeting was held with a local resident who expressed interest in volunteering as a Dungeon Master for the upcoming Dungeons & Dragons (D&D) club.

14/05 – A meeting with West Sussex Fire & Rescue Service to discuss local matters.

18/05 – A staff meeting held by Horsham District Council

In other news

Horsham District Council is inviting local primary school classes to come up with a fun, catchy name for one of its brand-new food waste collection trucks. By entering, your class could win **£50** for your school and an exciting **VIP visit** from the newly named vehicle.

Take a look at the competition details below, and submit your entry to Waste.prevention@westsussex.gov.uk putting "Food Waste Truck Naming Competition" in the subject line

<https://www.horsham.gov.uk/waste-recycling-and-bins/household-bin-collections/food-waste/name-that-food-waste-truck>

Competition: Name That Food Waste Truck



We are inviting **primary school classes** to come up with a fun name for one of our new food waste collection trucks that are now travelling across the District.

All suggestions should be based around food waste, recycling and the environment.

We are running this competition to celebrate the successful roll out of our new food waste collection service and to encourage children and their families to understand food waste and why reducing and recycling food waste is so important, both for the environment and also to help reduce household food bills.

We are grateful to all our residents who together managed to divert more than 550 tonnes of food waste from waste to recycling in just two months since the launch!

[Watch our short video on what happens to your food waste after collection](#)

The winning entry will win £50 for the school and a special visit before the end of term from the truck with the winning name on it.

The closing date for entries is 6pm on Friday 12 June.

Send your suggestions to Waste.prevention@westsussex.gov.uk and let's tackle food waste together!

Social Media/Press

Facebook: <https://www.facebook.com/HDWardens>

Twitter: <https://twitter.com/HorshamWardens>

Our monthly reports are available on the Southwater Parish Council website:
<https://www.southwater-pc.gov.uk/neighbourhood-wardens>

If you know of someone who would be interested in reading our monthly report, but they do not have access to the internet, please contact us and we will be happy to deliver a printed copy to them:

Bettina Long – 07789 943156

Dominic Woodhead – 07789 943193

Southwater.Wardens@horsham.gov.uk



**NEIGHBOURHOOD
WARDENS**

YOUR NEIGHBOURHOOD WARDENS

Southwater Parish



Dominic Woodhead
07789 943193



Bettina Long
07789 943156

If you wish to speak to us in confidence, please give us a call or email
southwater.wardens@horsham.gov.uk

 @HDWardens  @HorshamWardens



**NEIGHBOURHOOD
WARDENS**

THE WORK WE DO IN YOUR COMMUNITY

Based within the community, your Neighbourhood Wardens work alongside partner agencies to improve the quality of life for everyone and promote community cohesion and resilience. The Wardens undertake a number of activities, ranging from enforcement to community development.

Neighbourhood Wardens can help the community in the following ways:

- Meet the needs of the community and improve the quality of life for the residents, through engagement, promotion and support.
- Develop projects that benefit the local residents, to tackle community safety issues and promote inclusivity.
- Promote community cohesion, resilience and solidarity to encourage and empower communities to resolve issues.
- Support vulnerable members of the community with activities, advice, welfare checks and signposting.
- Engage with residents daily to get to know their local community and become a trusted friend to offer advice and guidance.
- Offer education and advice when required, before taking enforcement action.
- Contribute to the delivery of the Community Safety Partnership plan by working with other agencies.
- Provide a highly visible and reassuring uniformed patrolling presence.
- Provide an effective eyes and ears service aimed at reducing the fear of crime and improving quality of life.
- Work alongside the Police and submit reports regarding drug use, criminal damage and anti-social behaviour.

L25_CS06

In an emergency always dial 999

