



SPRING NEWSLETTER

January - March 2026

Welcome to your first edition of 2026 Newsletter where you will find out more about many of the challenges this new year has brought and some of the new ideas and actions taken to help tackle and reduce crime in Crofton Park. Community crime fighting initiative through local policing to support officers and to continue tackle some of the latest major issues in Crofton Park relate to Anti-Social Behaviour (ASB), retail crime, street crime and sexual offenders.

The Neighbourhood policing brings excellent opportunities to help improve police presence in your local area, support those at risk and building bridges between residents and key agencies that are vital in tackling crime and helping those in need of support. Surge in neighbourhood policing in communities fighting crime with more than 3000 police Community Support Officers (PCSOs) across London.

Your local community is playing an enormous role in helping to engage with local schools, businesses, and groups that take a stand for the changing in better of their local areas and are involved in improving their communities through local events. Later in this newsletter you will find out more about some of the most common reported crimes and plans that are used to reduce and transform the future of those at risk and protect local communities and across the country.



WHAT'S NEW?

Drop-in Surgeries taking place every week in Crofton Park!

Your local SNT are working closely with local partners and agreed to host 2-hour sessions where residents are invited to talk to local police around local issues, concerns or simply to have a cuppa with a copper at one of the agreed locations:

- Crofton Park Library
- Adult Learning Centre
- Ewart Community Hall

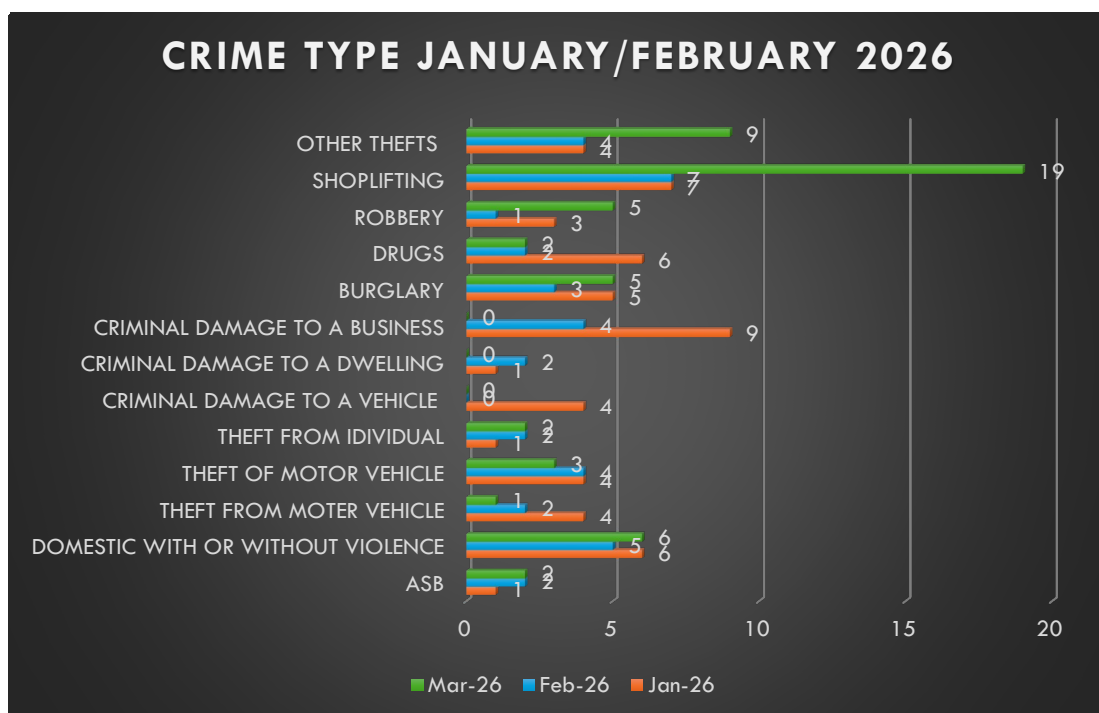


Dates and times to be confirmed regularly via [Met Engage](#)

!!! INTRODUCING COMMUNITY ROAD WATCH !!! to be continued on page 5...

Key Crime Data for Crofton Park 2026

Based on crime data available for February/ March 2026 Crofton Park Ward has recorded 240 total crimes with high specific drivers that include Anti-Social behaviour, Domestic with and without violence and/or injury, Theft, and Vehicle Crime. Despite being part of the borough with a high crime rate, Crofton Park remains one of the safer areas in Lewisham. The reported crime figures for the first quarter of 2026 indicate an unpredictable trend in offences with a drop in February followed by a significant spike in March. January has recorded 80 offences, February has seen a drop to 67 followed by March with 93 offences reported.



Anti-Social Behaviour (ASB) the incident involving the burning of Christmas trees in Blythe Hill Park, resulting in grass damage, constitutes **Environmental Anti-Social Behaviour (ASB)**. This type of incident is classified as Environmental ASB because it affects the wider environment, including public spaces. Other incidents relate to ongoing neighbouring issues over parking spaces, noise complaints and nuisance calls which have an impact on individuals' mental health and general wellbeing. Community Officers are working jointly and collaboratively with all parties, offering support and refer to the relevant departments for further support.

Anti-Social Behaviour can be a crime, or it can be a persistent behaviour that disrupts community life with different authorities having responsibility for different aspects.

When it is likely to be a crime and should be reported to the police

Threats & Violence – Verbal abuse, threats or physical violence

Harassment – The specific targeting of an individual or group of people

Serious Nuisance – Intimidation, systematic bullying, drug related issues, nuisance motor vehicles or vehicles parked causing significant hazard or obstruction

Criminal Damage – Vandalism, graffiti or large scale fly tipping

When to report to Local Authorities and Registered Social Landlords

Minor Nuisance - Noisy neighbours (if not part of an ongoing harassment case), littering, parking issues or uncontrolled animals and stray dogs (if dog is believed to be dangerous then ring 999)

Environmental issues – General dumping of rubbish, dog fouling, abandoned vehicles

What actions are taken to tackle ASB in Crofton Park?

- Increased visible patrols around the ward and hot areas, residential areas with vulnerable individuals, around schools and business.
- Liaising and partnering with multi-agencies, charities, local councils, and specialists is a cornerstone of effective, coordinated, and holistic support services, particularly within safeguarding, health, social care, and youth work
- Arranging Drop-in Surgeries in key locations where residents are invited and encouraged to liaise with local officers in safe, comfortable and close by places.
- Maintain communication and increase awareness on subjects of interest
- Share information on ways to report a crime



More information on ASB can be found [Antisocial behaviour | Metropolitan Police](#) For reporting information links will be provided later in this paper. The figures below can be accessed online via [Crofton Park | Your area | Metropolitan Police | Metropolitan Police](#). Government studies and key findings around ASB can be explored in depth by accessing the link below: [Anti-social behaviour: impacts on individuals and local communities - GOV.UK](#)

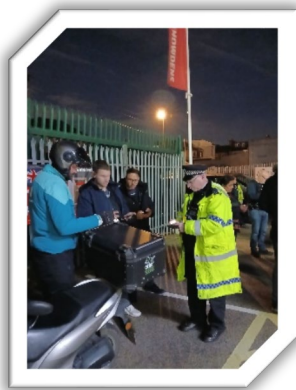
Anti-Social Behaviour Intervention Scheme (ASBEIS) 2026 helps identifying issues at an early stage working with partners to intervene and potentially prevent future criminal behaviour and minimize the impact of ASB on communities and victims using practices under Anti-Social behaviour Act 2014.



Domestic Harassment with or without Violence is one of the contributors in Crofton Park in 2026. Data from February 2026 with **Violence and sexual offences** ranking as the second highest (17 incidents). Majority of the cases are domestic-abuse related crimes included violence against the person offences, disputes, misuse of social media platforms where threats to harass have been made. These figures include neighbour disputes or shouting making threats through the wall, loud noises and banging in the walls.

Motor Vehicle Crime

The Safer Neighbourhood Team (SNT) continues to work with residents to tackle these issues that involve motor vehicle crime. Officers of Crofton Park conducted the biggest Pilot Operation involving Traffic Command, Road Danger Reduction Team (RDRT), TfL and Immigration Officers worked together to help reduce and to tackle mopeds speeding on and around Malham Road. This resulted in 5 arrests, 20 vehicle seizures, 24 traffic offence reports (TOR'S) for a variety of offences, 2 PG9 prohibition Notices for dangerous vehicle faults, 3 stop and searches, and the recovery of £1500 in unpaid fines.



Introducing Community Road Watch

Community Roadwatch (CRW) teams are groups of local people who volunteer their time to help keep their communities safe in partnership with the Police. Their aims are to:

- Reduce death and serious injury on the roads
- Improve the quality of life for their local communities
- Reduce the speed of vehicles to the speed limit
- Increase public awareness of inappropriate speed

Drivers are not prosecuted or fined as a direct result of CRW activity, but we hope that they are deterred from choosing illegal speeds in the future. The report will be held on our Community Roadwatch **records for 12 months**. If this behaviour is reported again, we will treat it as a deliberate decision to break the law, and we will take appropriate action.

Dates and times to be discussed and agreed upon request. Further information to be posted via [Met Engage](#) or email your local SNT inbox to participate.



Crofton Park has seen a positive trend, with an **identifiable decrease in thefts of and from vehicles** during the first quarter. This reduction is largely attributed to proactive police work, including the arrest of a prolific vehicle crime offender and individuals involved in tool thefts from vehicles.

- **Targeted Patrols:** The Crofton Park Safer Neighbourhood Team is conducting increased patrols along roads identified as vehicle crime hotspots.
- **Diligence Checks:** Officers are performing checks on vehicles parked in the ward to detect those that have been stolen.
- **Crime Prevention Initiatives:** Police are holding community events to provide safety advice, such as promoting Select DNA marking for vehicles and tools.
- **Suspicious Activity Focus:** Action is being taken against vehicles used for suspicious activities or those targeted for thefts of personal property.



Road Danger Reduction Team (RDRT) Funded by TfL, RDRT teams are based at 3 strategic locations across the MPS, working shifts, they are responsible for improving safety on London's Road's. They are on the front line tackling dangerous drivers and those without insurance or a licence.

The teams undertake various operations across London working with partners and other MPS teams including regular activity on Op Cubo and Op Vision Zero to reduce road danger and restrict the use of the road for criminals through targeted operations.

PCSOs within the team will also enforce speed limits using LaserCam and mobile speed vans. and the broader Road Danger Reduction (RDR) approach represent a shift in traffic management, focusing on eliminating danger at its source—primarily from motor vehicles—rather than simply advising vulnerable users on how to avoid being hurt. This strategy is central to "Vision Zero" initiatives, which aim to eliminate all traffic fatalities and serious injuries.



Recently, it was brought to our attention that cars are speeding on B218 Stondon Park, between the junction with Honor Oak Park and the junction with Sevenoaks Road, SE23, we have been conducting Laser Cam speed enforcement at this location since September 2022.

RDRT activity and results to date are as follows:

Enforcement Summary (Sept 2022 – Present)

- Deployments: 145
- Total Enforcement Hours: 134.97
- Total Speeders Detected: 3,865
- Average Non-Compliance Rate: 5.3%

The site remains active, and I continue to deploy there whenever workload allows. If helpful, I can also provide a detailed breakdown of each individual attendance, including dates, hours, and detection figures.

In March we had the one enforcement:

Date of Enforcement	Location Code	Start Time	Finish Time	Offences	Traffic Flow	Max Speed
28/03/2026	20039MOB	10:05	11:05	40	896	38

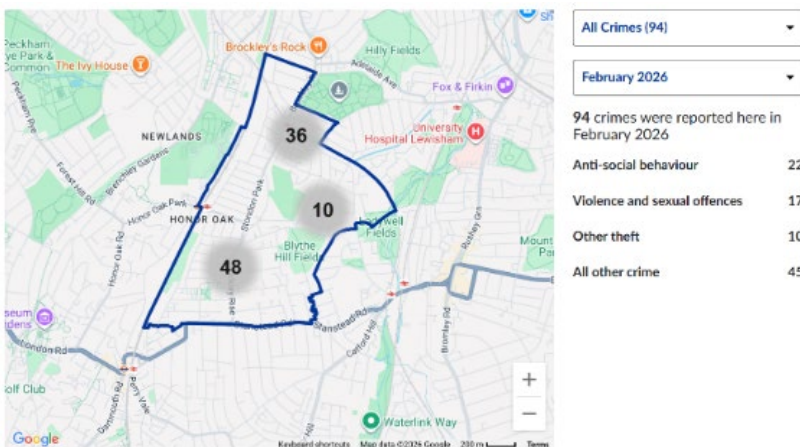
Crofton Park Ward Priorities

- **Drug Use/Drug Supply** SNT team have been made aware of drug supply/drug use in roads, especially around Dalrymple Road, Malham Road and the surrounding roads. Many of these offences occur by offenders using Motorbikes or Electric Pedal Cycles. Visibility patrols have been continued around the various known ASB areas and crime prevention advice has been issued. Officers have provided signs in repeat areas detailing the ongoing patrols conducted by the team. The team have been working closely with colleagues in Lewisham Council to ensure an appropriate response is provided to offenders concerned in ASB matters.
- **Theft from/of Motor Vehicles and Vehicle** Theft from/of Motor Vehicles and Vehicle This relates to the numerous cases recently within hotspot areas of Crofton Park where vehicles are being interfered with or used for suspicious activity and/or stolen. This has led to either personal property being taken from vehicles or entirely the theft of a Motor Vehicle. There has been a drop in offences across the ward as of recent due to arrests of offenders involved in tool thefts from vehicles.



- Your Officers have been arranging events for residents to attend for Officers to carry out Vehicle Selecta DNA Marking for if their vehicles are ever stolen and safety prevention advice to deter and lower the chances from it happening. In addition to this your Crofton Park Safer Neighbourhood Team have been patrolling more frequently along roads which have been a target of vehicle crime as well as diligently going around looking for Vehicles which have already been stolen with positive results. The team have recently arrested a prolific vehicle crime offender on the ward to which there has been an identifiable decrease.
- **Theft—Burglary & Shoplifting** This relates to the numerous cases recently within hotspot areas of Crofton Park where stores and premises are being targeted by offenders. These are focused on retail stores around Honor Oak, Brockley Rise and Stansted Road. The team have done considerable work to identify offenders on this and recently one main offender has been arrested and sentenced to nine months in prison. There has been increased communication and partnership with the main businesses targeted by the offenders, including security at one of the businesses. The team recently conducted arrests of individuals linked to 18 burglaries in our neighbouring borough of Bromley.

Crime Map January/February 2026



MET ENGAGE

Community crime-fighting

[Sign Up - Met Engage](#)

MET ENGAGE

Community crime-fighting



The screenshot shows the Met Engage website interface. At the top, there is a navigation bar with the Met Engage logo and the text 'Community crime-fighting'. Below this is a navigation menu with links for 'Home', 'Sign Up', 'Login', 'Latest Alerts', and 'Contact'. The main content area features a 'Sign up now' heading followed by a form with four input fields: 'First name*', 'Last name*', 'Postcode*', and 'Email address*'. Below the form is a checkbox labeled 'I agree to the terms & conditions.' and a blue 'Join' button. At the bottom of the page, there is a footer with the text 'In an emergency always call 999 or visit our website to report crime online - www.met.police.uk', the copyright notice '© 2025 - Met Engage - Privacy | Accessibility | Safer Neighbourhood Teams', and the 'neighbourhood ALERT' logo.

To reach out to your local team about policing issues email us at sntpl-croftonparkMPS@met.police.uk or pick your officer on [MetEngage](#)

Your Crofton Park SNT Officers:

Charlene Pavitt - Superintendent

Gavin Durnell - Inspector

Nathan Munday - Sergeant

Benjamin Angel

Police Constable and dedicated Ward Officer

Stephanie Morris

Police Constable and dedicated Ward Officer

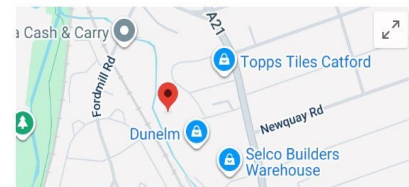
Iulia Merlusca—Police Community Support Officer

Address: 34 Aitken Rd, London SE6 3BG

Email: sntpl-croftonparkMPS@met.police.uk

How and what to report

- Non emergency NHS **111**
- Suspicious activity **101**
- Non emergency police **101**
- Emergency's **999**
- Mental health episodes **999** and ask for an ambulance



Catford Police Base (Tdp)

Police station in London, England



Ward Panel Meeting

Crofton Park Ward Panel Meeting

10:30AM - 12:00PM, Saturday 25th of July 2026

Crofton Park Library, 375 Brockley Road London

JOIN THE NEXT WARD PANEL MEETING BY SENDING US AN EMAIL AT

sntpl-croftonparkMPS@met.police.uk

Your voice matters! By attending, you'll help ensure local policing reflects our community's needs. No prior experience is needed—just a desire to make a difference.

Ward Panel Meeting is set to take place every three months and offers the opportunity to community members and partner agencies to meet and discuss local SNT ward priorities and check progress that was made on issues affecting the community.

It is an important mechanism that help us to understand the views of the community about crime and disorder in your neighbourhood.

The Ward Panel is your chance to:

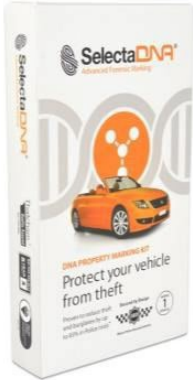
- Share your concerns and ideas to shape local policing priorities.
- Collaborate with the police to tackle community issues.
- Build trust and transparency through open dialogue.



The Ward priorities are

1. Increasing Police presence in the ward and reducing burglaries.
2. Reducing motor vehicle crime including tool theft.
3. Reducing public order offences helping residents and businesses to protect themselves

Motor vehicle crime awareness



We still offer vehicle marking

We have received multiple emails regarding vehicle marking. Although we haven't attended addresses yet to mark vehicles we are ready to do so.. Weather dependent.

Vehicle window etching — Glass etching with unique codes to individual pack that is issued.

Security stickers —Special security stickers that we place on the engine or chassis out of sight this sticker cannot be removed easily and leaves a mark.

Visible security stickers —These stickers can be put as a visible deterrent against vehicle thieves. Placed inside and easy to remove in case you no longer want it on show.

DNA marking drops —These drops can be applied via the applicator which is a clear dot barely visible to any device or property which has unique DNA assigned to individual packs. This is good for laptops or any high value property.

Information —Security information for your vehicle such as steering wheel locks and pedal locks ghost immobilizers and faraday pouches.

Tool marking kits —Much like the DNA marking drops specifically designed for tools.

Usually £60 but were giving them away for free!

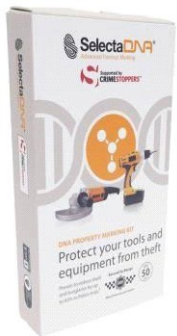


Figure 1 Due to the limited number of vehicle kits we have we have had to target a certain criteria of vehicles this is if your car was made in 2019 onwards or if it is a luxury vehicles.



**METROPOLITAN
POLICE**



Thank you!



**METROPOLITAN
POLICE**

NEW
SCOTLAND
YARD