

Metropolitan Police Service

SAFER NEIGHBOURHOOD TEAM

Crofton Park 2025

October—December 2025

The Safer Neighborhoods Team (SNT) for Crofton Park would like to take this opportunity and present you our latest Newsletter and give you an insight of what has been going on lately in your area. As the year is rapidly coming to an end this newsletter will give you an end of year summary of actions we have taken to benefit the community and help reduce and combat crime in Crofton Park. This Newsletter is issued every quarter and hopes to bring reassurance and peace of mind that Crofton Park is a safe place to live, raise families and thrive.

People's safety remains our number one priority.



METROPOLITAN
POLICE

NEW
SCOTLAND
YARD

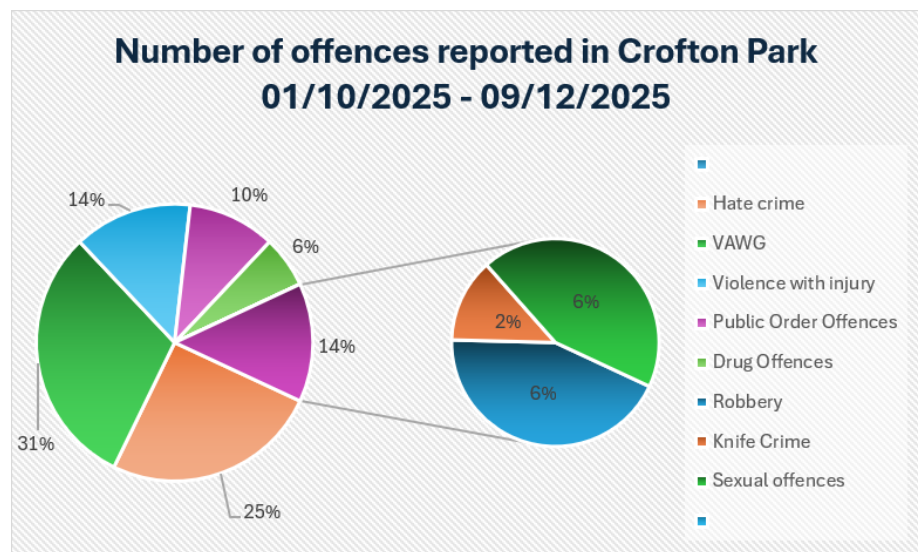
Quarterly update

Crofton Park recorded the lowest level of crime totaling 297 crimes out of 2575 offences reported in Lewisham borough between October and December 2025. Amongst these Violence Against Women and Girls (VAWG) remains our priority alongside hate crimes related to neighbor disputes, anti-social behavior as well as theft of/from motor vehicles. Considerably high number of offences related to drugs and robbery happened in various streets in and around Crofton Park.

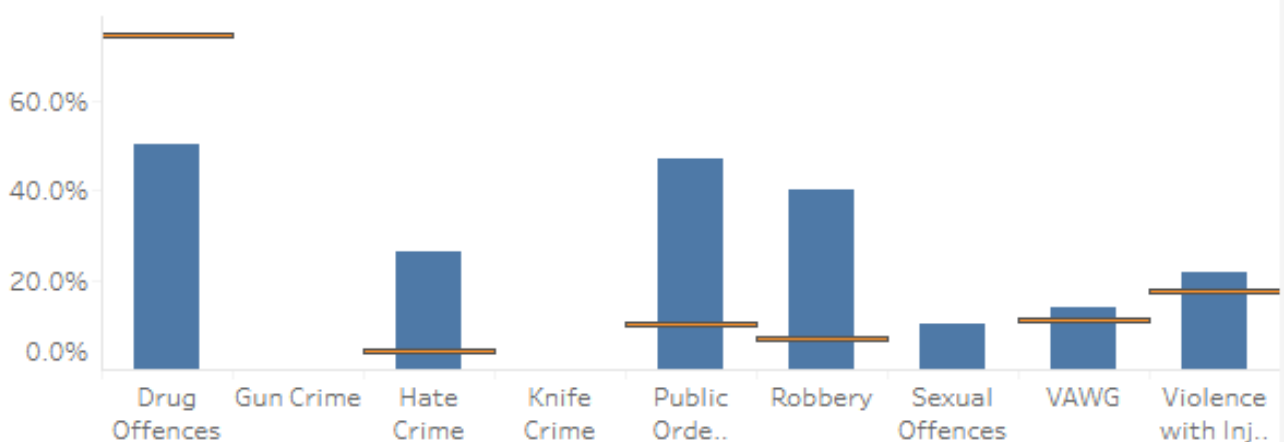
Crofton Park ward is committed to implementing the New Met for London to improve our response and performance for VAWG crimes, ASB, drug offences and robberies and keep people and places safe. We have increased police presence on streets and introduced MetEngage which allows us to stay closer to our residents, talk more with members of the public and encourage reporting any suspicious activity. Reporting enables police officers to take preventative measures and action at the right time in the right place. We have increased school patrols around kick-out times and around businesses which seem to be one of the most affected

Nonetheless, there are positive outcomes being recorded, as our dedicated police officers conducted arrests related to drugs, robberies and hate crimes in the past three months and offenders have been brought to justice. For further details please find out <https://www.metengage.co.uk/>

Type of Offence October	Number of offences
Total Number of Offences	297
Hate crime	42
VAWG	51
Violence with injury	23
Public Order Offences	17
Drug Offences	10
Robbery	10
Knife Crime	3
Sexual offences	10
Gun Crime	0



Are the Positive Outcome Rates changing?



What members in Crofton Park are saying are the issues in the area:



Agree or not? Have your say now, [click here to do the survey](#)

Your Safer Neighbourhood Team (SNT) is a group of dedicated Met Police officers based in your area who are committed to serving your community.

SNT are working closely with local authorities such as Lewisham Council, community leaders as well as residents and together decide policing priorities for the area. We work to find long-term solutions to local problems while focusing on reducing crime across London.

Local Priority Issues

- ♦ **Drug Use/Drug Supply** we have been made aware of drug use and supply on roads by offenders using Motorbikes and Electric Pedal Cycles. Visibility patrols have been conducted around the affected areas and around known places for ASB. The team have been working closely with colleagues in Lewisham Council to ensure an appropriate response is provided to offenders concerned in ASB matters.
- ♦ **Theft from/of Motor Vehicles and Vehicle** numerous cases around Crofton Park area about vehicles interfering with or being used for suspicious activities and/stolen. Your Officers have been arranging events for local residents to attend for Officers to carry out Vehicle Selecta DNA Marking for if their vehicles and have been patrolling more frequently along roads which have been a target of vehicle crime as well as diligently going around looking for Vehicles which have already been stolen with positive results
- ♦ **Theft—Burglary & Shoplifting** stores and premises around Brockley Rise, Honor Oak and Stansted Road are being targeted by offenders. The team have done considerable work to identify offenders in regards to this and recently one main offender has been arrested and sentenced to nine months in prison. There has been increased communication and partnership with the main businesses targeted by the offenders, including security at one of the businesses.

MET ENGAGE

Community crime-fighting

The **New Met for London** reform plan focuses on **More trust, Less crime, High Standards** through increasing local policing presence, improving performance to reduce crime and rebuild trust with local communities. Emphasizing on The New Met for London's Key initiatives and progress, more PCSO's are placed in your local neighborhood to help tackle crime and anti-social behavior.

London's exceptional diversity significantly drives ongoing vibrant cultural change turning London into a dynamic place where creativity thrives and global connectivity bring people from all over the world closer than ever. Policing services extend and reach out to many of those affected and some of the initiatives include policing services for vulnerable people are met by the most appropriate professionals through the Right Care, Right Person approach.

Phase 2 of The New met for London reform plan introduces Community Crime Fighting Live Events hosted all over London Boroughs to meet the Met, give local residents a chance to speak with officers, ask questions and address key concerns. You can also have your say and interact with us digitally through our new Met Engage platform <https://www.metengage.co.uk/>

MET ENGAGE

Community crime-fighting

SIGN UP NOW to tell us what matters most to **YOU**

[metengage.co.uk](https://www.metengage.co.uk)

MET ENGAGE

Community crime-fighting

We're transforming the Met to become a service that truly delivers for you.

Through our new platform Met Engage you can get to know your local officers, help shape how we police your local area and have direct access to key information and advice.

This isn't just a platform for us to tell you what we're doing in your area, it's an opportunity for you to tell us what's concerning you most so we can take action on the things that truly matter to you.

Our service will be tailored to your community.

Sign up today to tell us about the issues affecting you most, receive tailored crime prevention advice and updates on our activity in your area.



[metengage.co.uk](https://www.metengage.co.uk)

Ward Panel Meeting

Crofton Park Ward Panel Meeting

10:30AM - 12:00PM, Sat 31st January 2026

Crofton Park Library, 375 Brockley Road London

JOIN THE NEXT WARD PANEL MEETING BY SENDING US AN EMAIL AT

sntpl-.croftonparkMPS@met.police.uk

Your voice matters! By attending, you'll help ensure local policing reflects our community's needs. No prior experience is needed—just a desire to make a difference.

Ward Panel Meeting is set to take place every three months and offers the opportunity to community members and partner agencies to meet and discuss local SNT ward priorities and check progress that was made on issues affecting the community.

It is an important mechanism that help us to understand the views of the community about crime and disorder in your neighbourhood.

The Ward Panel is your chance to:

- ◆ Share your concerns and ideas to shape local policing priorities.
- ◆ Collaborate with the police to tackle community issues.
- ◆ Build trust and transparency through open dialogue.

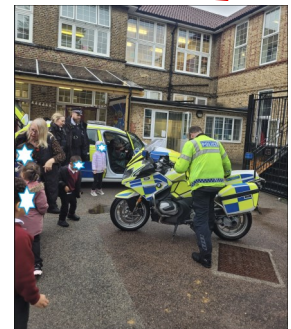


The Ward priorities are

1. Increasing Police presence in the ward and reducing burglaries.
2. Reducing motor vehicle crime including tool theft.
3. Reducing public order offences helping residents and businesses to protect themselves.

Met Engaging with you

Our dedicated officers PC Morris and PC Angel have organized a school Visit at Dalmain Primary School where London Ambulance services, London Fire Brigade and Met Police have coordinated and facilitated effective safety workshops to support KS1 age groups by offering classroom sessions where children had the opportunity to meet the police and emergency services, discuss their roles, get to try on their uniform and see equipment and vehicles they use. The children were thrilled to have us at the school and have filled their day with excitement and great memories to take back home to their parents and chat about with their loved ones. Thank you PC Morris and PC Angel for organising such a great day despite the weather conditions on the day. We would like to extend our thanks to all the teachers who got involved on the day and helped maintaining a great disciplined crowd for a great and unforgettable experience.





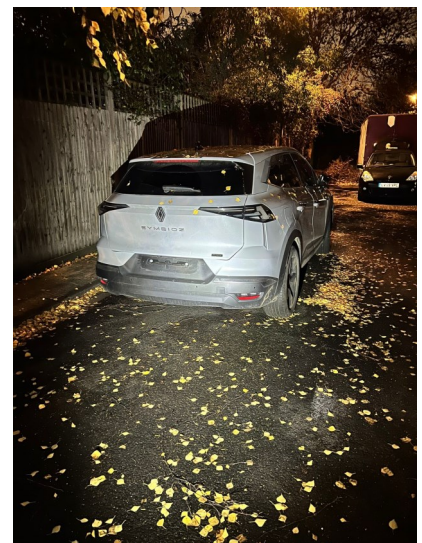
Met Engaging with you

This Christmas is the perfect time to engage with our community and spread the word to our local residents about our Met Engage platform. We are keen to hear from you about any concerns you may have as this can help prevent and combat crime and bring offenders to justice. PC Merlusca and PC Hassan were in Crofton Park Station, Honor Oak station as well as Forest Hill station ready to listen and talk to you. Thank you Forest Hill Society for organizing such a welcoming event, despite the cold weather, community along side Councillor Peter Bernards and Billy Harding came together and sang Christmas carols celebrating the festive season and the Christmas tree light switch on in partnership with our local Lewisham Council. For details click here <https://lewisham.gov.uk/articles/news/join-a-christmas-tree-light-switch>

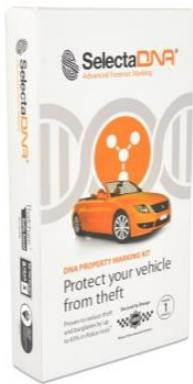


MOTOR VEHICLE CRIME OPERATION

In October 2025 the Motor Vehicle Crime operation took place and was organised by Forest Hill SNT, Perry Vale SNT and Crofton Park SNT. The operation covered the whole Lewisham borough with its main purpose to prevent and combat Vehicle Crime such as Theft from motor vehicle, Theft of Motor vehicle and general crime that takes place whilst using Motor vehicles. Dog Unit, Traffic Police and Solo Bikers were also involved and officers worked together in order to achieve a good outcome for not only Lewisham but Crofton Park as well due to officers being tasked specific areas to target within the ward to deal with the ongoing vehicle thefts. More targeted actions were taken in Crofton Park where PC Angel and PC Morris have found several stolen vehicles in and around Crofton Park.



Motor vehicle crime awareness

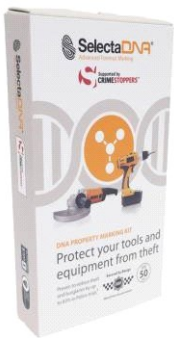


We still offer vehicle marking

We have received multiple emails regarding vehicle marking. Although we haven't attended addresses yet to mark vehicles we are ready to do so.. Weather dependent.

Vehicle window etching — Glass etching with unique codes to individual pack that is issued.

Security stickers —Special security stickers that we place on the engine or chassis out of sight this sticker cannot be removed easily and leaves a mark.



Visible security stickers —These stickers can be put as a visible deterrent against vehicle thieves. Placed inside and easy to remove in case you no longer want it on show.

DNA marking drops —These drops can be applied via the applicator which is a clear dot barely visible to any device or property which has unique DNA assigned to individual packs. This is good for laptops or any high value property.

Information —Security information for your vehicle such as steering wheel locks and

HOW IT WORKS



Step 1

Use SelectaDNA to mark and protect your property



Step 2

Put signs up to show that your home or business is protected



Step 3

Register your unique DNA code on our secure database

Due to the limited number of vehicle kits we have we have had to target a certain criteria of vehicles this is if your car was made in 2019 onwards or if it is a luxury vehicle.

We hope to continue these a events and with time open up the eligibility to everyone.

Keep your vehicle & property safe

THIEVES BEWARE



SelectaDNA®
Advanced Forensic Marking

DNA MARKED & POLICE TRACEABLE

www.selectadna.com

0400012



**METROPOLITAN
POLICE**



Tool Marking

Why YOU should use tool marking..

- Tool marking is a simple and effective way to insure your tools can be identified and linked to you.
- The marking solution is a unique DNA to the specific kit and once applied will dry clear but glow under UV light.
- Not only is applying the DNA marking to tools or other items very quick and easy to do but registering your tools online takes a couple of minutes and is equally as simple.

Why WE want use tool marking..

Tool theft is often unpredictable and a spur of the moment type theft. Marking your tools insure that if these tools are ever found on someone, in someone's vehicle, at a car boot sale, or found in a raid they can be easily identified not only returned to the original owner but it also proves that they belong to another thus giving further evidence to convict the seller of handling stolen goods or theft.

When/where we are marking tools..

January 2026

We have been attending local building merchants and giving these kits to customers provided they sign up.

If you are a person who works within the trades and is interested in these kits feel free to get in contact with us and we will let you know when and where we will next be giving these away..

If you reside within FOREST HILL I am happy to attend your address to provide you with one.



(Signing up to Selecta is required, no details are kept by police)

Crofton Park

To reach out to your local team about policing issues email us at sntpl-.croftonparkMPS@met.police.uk or pick your officer on [MetEngage](#)

Your Crofton Park SNT Officers:

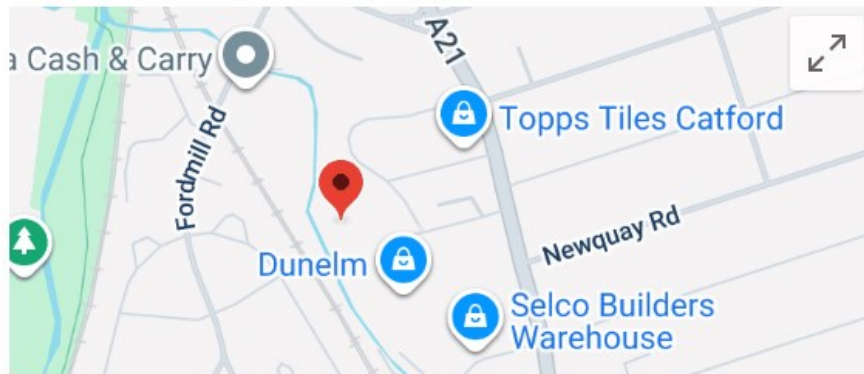
Benjamin Angel

Police Constable and dedicated Ward Officer

Stephanie Morris

Police Constable and dedicated Ward Officer

Julia Merlusca—Police Community Support Officer



Catford Police Base (Tdp)

Police station in London, England

How and what to report

- Non emergency neighbour disputes **101**
- Suspicious activity **101**
- Non emergency police **101**
- Emergency's **999**
- Mental health episodes **999**
- Non emergency medical **111**

