



Leicestershire
Police

Protecting our communities

leics.police.uk

Hamilton, Humberstone and Netherhall Beat Newsletter

Issue: December 2025

Beat Officers

Police Constable:

Sophie Hancock 2171

Police sergeant:

Naomi Mitchell 0990

Police Constable:

Martin Sneath 572

Police community support officer:

Mahomed Aboobaker 6102

Police Community support officer:

Zaynab Shaikh 6030

Neighbourhood Link

Neighbourhood Link is an easy, free email messaging service from Leicestershire Police, Neighbourhood Watch and other local partner organisations, providing news and updates on policing matters that are relevant to you. Sign up to receive email alerts about police activity and initiatives in your local area, crime prevention advice and information and warnings about current scams and fraud. You'll have the opportunity to reply directly to your neighbourhood team and have your say on your local policing priorities.

What's been on the beat:

Summary:

NE12 covers the communities of Netherhall, Hamilton, and Humberstone. If you live in any of these areas, this newsletter brings you a quick round-up of what your local beat team has been working on over the past month. Stay tuned for updates on upcoming events and initiatives aimed at keeping our neighbourhoods safe and connected.

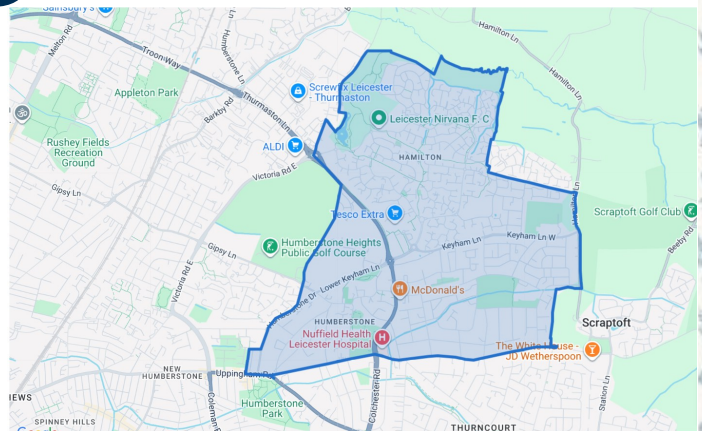
Continuous Criminal Damage in the Netherhall:

Over the past 2 months, officers have continued to monitor a rise in incident of criminal damage affecting buses travelling along the Netherhall road route. These incidents have involved objects being thrown at vehicles and other forms of damage that pose risks not only to the drivers and passengers, but also to the wider community. Information so far suggests that some of the behaviour may involve young people from the local area. These actions not only disrupt public transport services but also pose a risk to the safety of passengers and the wider community. Our officers are actively investigating these reports and working diligently to identify those responsible. Once identified, appropriate action will be taken to ensure accountability and prevent further occurrences. We encourage residents to remain vigilant and report any suspicious activity to the police via 101 or anonymously through crime stoppers. Your cooperation is vital in helping us maintain a safe and secure environment for everyone.

Thank you for your continued support throughout this whole year.

Residential breaks and burglaries:

As the nights grow longer, it's important to take extra precautions to keep your home secure. Ensure all doors and windows are locked, even when you're at home, and consider using timer switches for lights to give the impression that someone is in. Avoid leaving valuables in plain sight and keep sheds and garages locked. If you have a security alarm or CCTV, make sure it's working properly. Most importantly, stay alert to suspicious activity in your area and report anything unusual to the police. A few simple steps can make a big difference in keeping your home and family safe.



- Map of NE12 Beat



Follow your local police
team on social media:



Access services, information,
advice and report crime
using our website:



Sign up to Neighbourhood
Link, our free e-mail
update service:



-Burglaries:

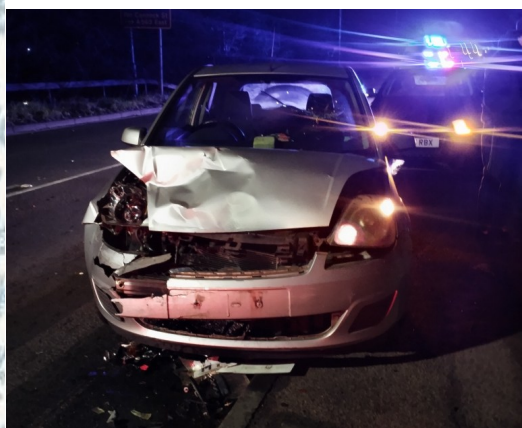
Officers on patrols on the beat responded to a report of a burnt-out motorbike discovered in the bushes at Netherhall Park. Upon arrival, the motorbike was found completely destroyed, and it is suspected to have been stolen. The vehicle was recovered by officers as part of ongoing inquiries, both to determine if it was involved in criminal activity and to identify and inform the rightful owner.



Maintaining Road and Public Safety:

As we head into the festive season and beyond, remember that driving under the influence is one of the leading causes of serious accidents. If you plan to drink, ar-

range alternative transport such as a taxi, public transport, or a designated driver. Even a small amount of alcohol can impair judgment and reaction times, so the safest option is not to drive at all after drinking. Look out for friends and family—encourage them to make safe choices too. Together, we can keep our roads safe and prevent avoidable tragedies.



- Safety Advice around celebrating Christmas and New Years Safely:

The festive season is a time for joy and togetherness, but it's important to stay safe while celebrating. If you're hosting gatherings, keep walkways clear of decorations to prevent trips and falls, and never leave candles or cooking unattended. When using fairy lights, check they're in good condition and switch them off before going to bed. If you're heading out for parties or fireworks, plan your journey in advance and avoid driving if you've been drinking. Finally, secure your home before leaving—lock doors and windows and keep valuables out of sight. A little preparation ensures your celebrations are happy and safe for everyone.

Below are the upcoming beat surgery dates that the team usually host in the month. These are a chance for the members of the community to come and address any issues or concerns that they may be experiencing or even just a chance to have a chat with the officers.



The NE12 beat would like to wish everyone a Merry Christmas and a Happy New Year!!!

Community Engagements

Come meet your local neighbourhood police beat team and ask away any questions that you may have or even just come along to say hello!

- 06/01/2026 - 10am– 11am -Beat Surgery at Hamilton Library, 20 Maidenwell Avenue, Hamilton, Leicester, LE5 1BL.
- 09/01/2026 – 3pm - 4pm- Beat surgery at Netherhall Neighbourhood centre, Armdale Drive. Leicester, LE5 1HF.
- 23/01/2026- 11am-12pm - Beat surgery at Hamilton Library, 20 Maidenwell Avenue, Hamilton, Leicester, LE5 1BL.
- 27/01/2026– 3pm – 4pm - Beat surgery at Netherhall neighbourhood centre, Armdale Drive, Leicester, LE5 1BL.

Sign up to Neighbourhood Link: www.neighbourhoodlink.co.uk



