

Funded by

GMCA GREATER
MANCHESTER
COMBINED
AUTHORITY



Fully funded pathways enabling
people to thrive in life and work

PATHWAYS OVERVIEW





WHO WE ARE

The Job Gym is empowering Greater Manchester through accessible adult education, we equip individuals with skills for personal growth, career advancement, and community impact

Our network includes a range of partners from voluntary and community organisations to larger training providers.

Our government-funded training pathways support a broad range of GM communities, priority learner groups and priority sectors including hospitality, health and social care, construction and logistics. They are tailored to meet each individuals needs and strive to improve learners' life prospects with pathways focusing on improving people's mental health and wellbeing, digital skills, English and maths.

Pathways transform lives by building confidence, unlocking opportunities, and fostering lifelong learning, driving positive change across Greater Manchester.

Our specialist partners:

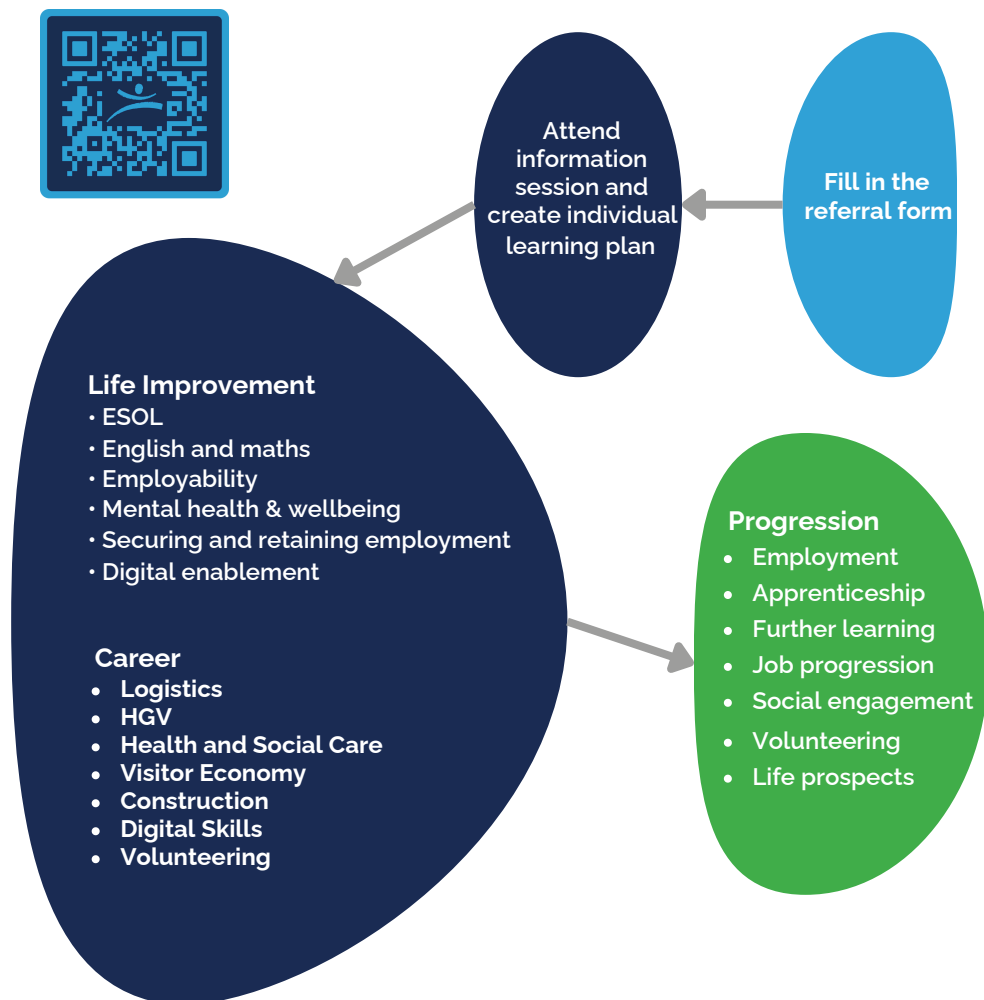


HOW TO REFER

Step 1- fill in the fast track referral form (scan the QR code)

Step 2- the learner to attend an in-person information session (30 mins virtual session over Microsoft Teams for certain pathways) for a pathway overview

Step 3- 1-2-1 initial assessment with one of our expert learner coordinators who will discuss individual needs (e.g. skills gaps, access barriers, learning difficulties)



HOW PATHWAYS WORK

WHAT ARE PATHWAYS?

Pathways are pathways that have been tailored to each learner's individual needs and career goals. When a learner comes to us we assess them and develop a plan to help transform them into the ideal candidate for the industry they want to enter or progress in.

WHY PATHWAYS?

Our pathways aim to equip learners with more than just a qualification. They teach learners additional skills that will round out the learners profile, not only for their next roles but subsequent roles after. Pathways are designed to help get learners on a path to a career.

WHAT IS AN EXAMPLE OF A PATHWAY?

Our Visitor Economy Pathway which includes emergency first aid, wellbeing and SIA - Door Supervisor to gain their SIA licence. This pathway gives learners the skills, knowledge and behaviours to get their foot on the career ladder.

WHAT OUR LEARNERS HAVE TO SAY ABOUT US

"Qualifications, advice, knowledge and the chance to better yourself. I've really enjoyed coming. I'm going to miss it"

Dawn Cooney



"I was on the street six and a half years, with no motivation to do anything. But now I have the confidence and a job"

Nico Carlyle



"I had anxiety and low confidence. All the staff have really helped me to boost my confidence, I'd recommend it to anyone"

Lisa Bell





LOGISTICS PATHWAY

With the growth of next-day delivery services, fuelled by home shopping, there is an increasingly greater demand for logistics workers across the UK.

The sector is in high demand for skills and is at the forefront of technological developments, making both international trade and local deliveries possible.

Step into the fast-paced world of logistics and supply chain management. From warehouse operations to HGV driving, our training prepares you for a range of roles in this essential industry.

Our Logistics Pathway incorporates sequenced pathways that deliver skills in warehousing and storage, industrial cleaning and support, gaining your forklift truck certificate and more.

JOB OPPORTUNITIES

- Commercial cleaner
- Warehouse operative
- Stock controller
- Forklift truck driver
- Transport route planner
- Returns handler
- Order processor
- HGV Driver

**DID
YOU
KNOW**

The UK logistics industry employs over 2.6 million people and is growing rapidly

DID YOU KNOW?

Over half of online shoppers value next-day delivery, and 91% choose where to buy based on next-day delivery options

ROAD TO SUCCESS

Learners can become a warehouse operator or logistics assistant with a forklift certification. Learners could progress into more senior or management roles or transition out of the warehouse into an HGV role.

OUR PATHWAY INCLUDES TRAINING IN:

- Route planning
- Problem solving
- Manual handling
- Handling hazardous materials
- Goods handling, picking & packing, stock control
- Dealing with returns
- Forklift truck licence
- Customer service
- Hygiene & cleaning
- Health & safety
- Team working

"I wanted to get a job and get off employment benefits, to give me a better future. I was on the streets for 6 years with no hope, or help. I have now gained experience, knowledge and a forklift truck licence.

It has also helped with my confidence, I used to be paranoid about people staring at me, I was a nervous wreck. I have now gained employment.

It has helped me become a better person. It's been amazing!" -Meet Nico Carlyle, Scan the QR Code to hear more of his story





HEALTH & SOCIAL CARE PATHWAY

Our mental health and wellbeing is something we must prioritise. 1 in 6 adults suffer every week in the UK with poor mental health problems.

Make a difference in the lives of others with a career in health and social care. Our courses provide the key skills needed for roles in nursing, caregiving, and community support. With wellbeing and mental health training, whether you're entering the sector or looking to advance, this pathway offers the tools to succeed in a fulfilling and impactful field.

DID YOU KNOW?

People aged over 70 in Greater Manchester is set to rise by 15.2% within 3 years

OUR PATHWAY INCLUDES:

- Safe handling of medication
- First aid
- Infection control
- Adult social care
- Common health conditions
- Care planning
- Mental health awareness
- Dementia and end of life
- Safeguarding, equality & diversity

JOB OPPORTUNITIES

- Care worker
- Personal assistant
- Social worker
- Administration
- Supervisor
- Occupational therapist

VISITOR ECONOMY PATHWAY (SIA)

Security is needed in multiple industries such as door supervision, shopping centres and festivals, as well as security at retail stores or industrial sites.

Turn a passion for events and tourism into a rewarding career. This pathway combines essential skills for security with first aid and wellbeing training, preparing learners for roles in security and event management in the visitor economy.

Excel in an industry that values people skills, service, and awareness.

OUR PATHWAY INCLUDES TRAINING IN:

- Obtaining your SIA badge
- First Aid and emergency procedures
- Mental health awareness
- Drug and substance misuse
- Customer service
- Conflict management
- Health & safety

"When the security course became available. I thought I would try it out and I am thankful I did. I really enjoyed it, the tutors and class were amazing and we really got on. Now that I am working, I am more me again. I am focused and meeting new people."

-Meet Kayleigh Baigrie-Short, Scan the QR Code to hear more of her story



JOB OPPORTUNITIES

- Security officer
- CCTV operator
- Door supervisor
- Steward

**DID
YOU
KNOW** ?

Parklife, at Heaton Park is attended by **over 80,000 people** creating the demand for high levels of security.

CONSTRUCTION PATHWAY



The CITB estimates the UK needs 250,000 more construction workers by 2028 for private housing, infrastructure and maintenance projects.

Build a foundation for a career in the construction industry. Our pathway equips learners with the skills and certifications needed to succeed in roles such as site management, carpentry, and more. It covers the knowledge and techniques needed to begin a career in construction with help in securing employment and Health & Safety awareness.

OUR PATHWAY INCLUDES TRAINING IN:

- Safe Handling Techniques
- Compliance with Regulations
- Health and Safety Awareness
- Develop skills within communication and teamwork

**DID
YOU
KNOW**

Greater Manchester
plans to build
10,000 new homes
every year for the
next 10 years

JOB OPPORTUNITIES

- General labourers
- Site maintenance workers
- Cleanup crew
- Construction operative
- Groundworker

DIGITAL SKILLS PATHWAY

Technology is playing a greater role in our daily lives. With the increase of hybrid and home working roles, and Zoom calls, there is a greater need for digital skills,



Future-proof your career with essential digital skills. From basic IT proficiency to advanced Word, PowerPoint and Excel, this pathway prepares learners for roles in modern offices, retail, and more.

Stay ahead in a tech-first world and unlock opportunities in one of the fastest-growing sectors.

JOB OPPORTUNITIES

- Office admin
- Customer service representative
- Sales Adviser
- Copywriter

OUR PATHWAY INCLUDES TRAINING IN:

- IT fundamentals
- Understanding business communication
- Excel spreadsheets
- Word processing
- Virtual meetings
- Digital communication
- Staying connected
- Customer Service

DID YOU KNOW?

20% of people in the UK are not currently using the internet in any capacity.

VOLUNTEERING PATHWAY

"I never knew I had a mental health problem until I started the well-being and the mental health level 1 and level 2 courses. The problem was I was sleeping all day and up throughout the night. The courses have been brilliant as they have occupied my mind" - *Meet Andrew Pickford, Scan the QR Code to hear more of his story*



Approximately 14.2 million people in the UK volunteered through a group or organisation.

From community projects to charity work, this pathway helps learners grow personally and professionally.

Gain valuable experience and give back to your community through our Volunteering Pathway. This route is perfect for those looking to build transferable skills, boost their CV, and explore new career options.

THE PATHWAY INCLUDES:

Wellbeing

- Effects of stress
- Healthy coping strategies
- Alcohol or drug misuse
- Healthy lifestyle
- Conflict management

Mental health awareness

- Supporting an individual with mental health issues
- Social and personal effects of mental health

**DID
YOU
KNOW?**

75% of people who receive mental health help reported it was beneficial

HOW FUNDING WORKS

Government funding for learners is available if they meet certain criteria. This allows for learners to upskill into a new role or career, or gain in demand skills.

Full funding is available to learners that meet all the following criteria:

- Live in Greater Manchester
- Unemployed or earn under £25,000
- Have lived in the UK/EU for the last 3 years
- Are 19+

A 50% contribution will be required if the learner earns over £25,000.

At The Job Gym we aim to have the most positive impact possible on learners. We aim to help learners thrive in life and work.

The Job Gym has brought positive outcomes for the residents of GM in 2024



We had 6,453 referrals



2,124 learners completed



78.6% achievement rate

FREQUENTLY ASKED QUESTIONS

Q: How long will the pathway take?

A: The length of pathways can vary due to demand for the pathway, pathway complexity and individual pace of learning.

Q: I have submitted my application. What happens next?

A: We aim to respond within 48 hours of the enquiry. Our Learner Engagement Team will get in touch as soon as possible and guide learners through the application process.

Q: Do I have to do both the English and maths initial assessment?

A: Depending on the pathway that you are applying for you may be required to sit an initial assessment. This determines if you have the necessary English and maths skills for your chosen pathway, and identifies areas where you might need additional support or training in those subjects.

Q: Can I do a Job Gym pathway if I am doing another pathway with a different provider?

A: Learners can do multiple Adult Skills Fund funded pathways at the same time, with one or multiple providers.

Q: I am not a UK resident yet, I have refugee status/am on a Visa, am I eligible for funding?

A: If permit or VISA allows access to public funding.

WHAT MAKES US GREAT

Ofsted Rated Good

The Job Gym has been recognised as a Good Provider by Ofsted following an inspection in 2023. The grade reflects our quality of teaching and our emphasis on learners.



Disability Confident Employer

The Job Gym runs a Disability Confident Scheme, offering an interview to a fair and proportionate number of disabled applicants that meet the minimum selection criteria for the job.



Age-Friendly Employer

As part of the Age-friendly Employer Pledge we are committed to recognising the value that older employees bring to a business and will take necessary action to help them flourish as part of an age diverse workforce.

We're an
**Age-friendly
Employer**



0333 220 6645

WWW.THEJOBGYM.COM

THE JOB GYM, MIDDLETON, M24 1RU

Funded by

GMCA GREATER
MANCHESTER
COMBINED
AUTHORITY