

Adur NHW Newsletter



Lancing & Sompting Issue

March / April 2026

Your Committee

David Hansford :	Chair
Doris Martin	Deputy Chair
Steve Male	Secretary
Steve Martin	Treasurer
Ron Marsh	Committee Member
Robin Monk	Committee Member
John Nutt	Committee Member

Email: adurnhw@gmail.com

Neighbourhood Police Meeting

Bicycle and moped theft, shoplifting, drug dealing and graffiti all featured as topics at the Neighbourhood Police meeting at the Ardington Hotel.

Sergeant Craig Burgess mentioned that, with the coming of spring weather, the Police had more work to do, notably as regards bicycle and moped thefts. Many bike thefts were as a result of bikes being left unsecured or being secured using inadequate cable locks which could be severed without difficulty. Additionally, fifteen mopeds had been stolen and it was quite possible for these to be hotwired.

A number of bike theft hotspots had been identified and Neighbourhood Watch members had visited some of these in order to raise awareness of the need to secure bikes using robust chains or D-locks.

Shoplifting continues to be an issue although the Police are getting better at dealing with it, but persistent offenders remain at large and some are released straight away after having been taken to court.

Open drug dealing using crack pipes had been noted at Denton Gardens and Amelia Park, where needles had been found. A stabbing had also been recorded in the vicinity of Victoria Park with one person arrested and charged with causing grievous bodily harm and supplying drugs.

Very young people are now being admitted to rehabilitation; some of these have been using cannabis before the age of 10 and they are difficult to help. The Certificate in Outreach Social Care, which is a specialised qualification designed to equip learners with practical skills for supporting vulnerable individuals in community settings, is available but schools lack the capacity to accommodate it, due to the constraints imposed by their curricula. The Chairmen of the local School Governors will, however, be approached with a view to its being incorporated within school activities.

Worthing railway station has been targeted extensively by graffitists, so Southern Rail is encouraging community groups and volunteers to join the "adopt a train station" scheme, with a focus on enhancing the station's appearance and improving amenities. Interested parties should contact Southern's community team at community@gtrailway.com or speak to a station manager.

Tim Drew

To Join : <https://worthingnhw.ourwatch.org.uk/Content/Pages/Join-Us>

Operation Shadow Storm

A new Global Fraud Taskforce has been launched to dismantle transnational fraud networks. Fraudsters targeting the British public will be tracked by a new INTERPOL Global Taskforce, launched at the Global Fraud Summit last month.

Codenamed Operation Shadow Storm, the new taskforce will combine the intelligence of INTERPOL's 196 member countries to take the fight directly to fraudsters. Jointly developed by the UK and INTERPOL, the new unit will target the scam organisations driving a growing share of global fraud, initially focusing on dismantling criminal operations across South East Asia.

It comes as the UK led the convening of 40 ministers, over 100 countries and 300 industry leaders at the Global Fraud Summit in Vienna to drive action against fraud, in response to new figures showing that over two thirds of scams targeting the British public originate from abroad.

Working across borders, investigators will pool intelligence to trace where fraudsters are operating from and the bank accounts, crypto wallets, phone numbers and social media profiles they use. Under INTERPOL coordination, law enforcement agencies will move quickly to disrupt operations at source – freezing bank accounts, shutting down communication channels and carrying out coordinated raids to bring scam networks to justice.

The Summit brought together governments, law enforcement, banks and tech giants to strengthen global cooperation to tackle fraud, as criminals increasingly exploit online platforms to target victims worldwide.

Signatories pledged to share more intelligence, the better to identify and act on emerging threats and coordinate to disrupt scammers' operations before they reach victims. Those signed up include G7 countries, Singapore, South Korea, Japan, Meta, Google, Amazon, Match Group, VMO2 Media and the International Banking Federation.

Nick Sharp, Deputy Director of the National Economic Crime Centre at the National Crime Agency, said:

“The Global Fraud Taskforce is an exciting and important step forward in our fight to tackle transnational fraud networks on a global scale. It will provide a platform for multilateral cooperation with law enforcement around the world to target suspects and build on our strong public and private sector relationships to disrupt money flows and stop fraudsters in their tracks.”

Tim Drew

Spam Emails

Bitdefender Antispam Lab (<https://www.bitdefender.com>) has identified a surge in spam emails crafted to steal sensitive information, payment details, or both. Although many messages look legitimate, they actually come with malicious intentions hidden behind cheerful subject lines. Referencing exclusive discounts.

Here are some of these scams, and how to avoid them:

1. Fake sales and giveaway websites, offering too-good-to-be-true discounts, gifts, or holidays. Stick to well-known retailers and avoid clicking on suspicious ads.
2. Phishing messages disguised as delivery or bank alerts in the form of emails or texts about transactions or parcel delays, designed to capture your online banking login details. Don't click links but go directly to the retailer or the bank's official site.
3. Bogus charity appeals from fake NGOs (non-governmental organisations) requesting donations. Verify that charities are registered through official platforms
4. Social media giveaways - "Win a hamper" scams asking for personal info or processing fees. Never share sensitive information - real giveaways never require payment.
5. Too-cheap-to-be-real travel packages consisting of fraudulent holiday accommodation deals. Always book via verified agents or directly through known providers. Last-minute booking opportunities during such a sought-after period should always raise your eyebrows.
6. E-cards carrying malware in the form of greeting cards with malicious attachments or links. Only open e-cards from people that you know and trust.
7. Free trials with hidden subscription traps, such as services that auto-renew without notice. Always read the fine print! Set reminders to cancel and check your statements.
8. Fake discount vouchers or coupons circulating on WhatsApp and social media. Use voucher codes only from retailers' official Apps or websites.
9. Investment scams, including schemes promising "growth boosters". Avoid unsolicited financial offers. No legitimate investment guarantees high returns.

See the latest Alerts at : [https:// worthingnhw.ourwatch.org.uk/](https://worthingnhw.ourwatch.org.uk/)

Litter Picks

Neighbourhood Watch has a strong association with litter picks, and they're an effective way of bringing the local community together. Whether it's for only half an hour or a couple of hours, neighbours young and old can take part. It helps keep your area looking nice and well-cared for – and safer, too. And it makes local people feel prouder about the area in which they live.

At no time was community spirit more in demand than at the beginning of this year, when a large amount of cargo lost in rough conditions at sea started to wash up on the south coast from Selsey to Seaford. Not only were the cargo contents harmful in themselves, but also the materials of the containers breaking up in the sea were equally as detrimental to the environment.

Insulating material, plastic, metal and wires from the containers all pose a threat to our marine habitats. Foam and polystyrene will continue to break down into smaller pieces which seabirds might mistake for food. And the impact of the food lost overboard would be significantly less were it not for the plastic wrappers and net bags holding them.

On this occasion, locals rallied round in style and Sussex Underwater (<https://sussexunderwater.uk>), a community-led conservation group which is dedicated to protecting our marine environment for the benefit of Sussex residents, was amazed at the level of engagement shown by locals in supporting the clean-up efforts despite driving rain, wind and a seemingly insurmountable amount of litter.

If you wish to help, consider taking a rubbish bag with you on your next beach trip and look up your local environmental charities to see if they have arranged a beach clean – in addition to Sussex Underwater, there are Leave No Trace Brighton (<https://leavenotracebrighton.org>) and Sussex Wildlife Trust (<https://sussexwildlifetrust.org.uk>) who share cleanup events on social media.

Away from the beach, the Friends of Tarring Park hold monthly litter picks on the second Saturday of every month at 10.00 am, meeting by the picnic benches near the Church House Grounds entrance. Equipment is provided but please wear appropriate footwear and bring gloves.



Recycling Centres

Spring - Summer Opening Times:

Worthing :

7 days 9am - 6pm

Shoreham :

Wednesday -Thursday - Friday -Saturday - Sunday 9am -6pm

You will need to book a time slot online via the WSCC website.



<https://adurnhw.my.canva.site/>

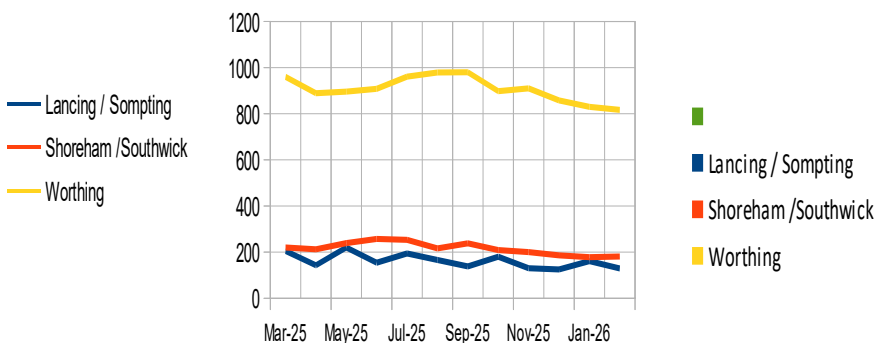
Crime Statistics for January 2026 (Issues 8/4/2026)

January 2026	Churchill	Cokeham	Manor	Mash Barn	Peverel	Widewater	Sub Total
Antisocial Behaviour	4	2	5	6	6	5	28
Bike Theft	0	1	1	0	0	0	2
Burglary	0	0	2	2	0	0	4
Criminal Damage	0	0	1	4	1	4	10
Drugs	1	0	1	1	1	1	5
Other Crime	2	0	3	0	2	1	8
Other Theft	2	0	3	3	2	1	11
Weapons	0	0	0	0	1	1	2
Public Order	5	1	0	1	4	2	13
Robbery	1	0	1	1	0	0	3
Theft Shop	7	0	1	3	4	0	15
Theft Person	0	0	0	0	0	0	0
Vehicle Crime	0	0	0	0	0	1	1
Violence & Sex Offences	9	6	5	10	14	15	59
Totals	31	10	23	31	35	31	161

Crime Statistics for February 2026

February 2026	Churchill	Cokeham	Manor	Mash Barn	Peverel	Widewater	Sub Total
Antisocial Behaviour	4	0	3	8	0	8	23
Bike Theft	0	0	0	0	0	0	0
Burglary	0	2	0	1	0	0	3
Criminal Damage	4	0	1	3	0	0	8
Drugs	0	0	1	1	1	2	5
Other Crime	0	0	0	0	1	2	3
Other Theft	3	1	3	1	2	4	14
Weapons	0	0	0	1	0	2	3
Public Order	2	1	0	2	1	3	9
Robbery	0	0	0	0	0	0	0
Theft Shop	7	0	0	1	0	0	8
Theft Person	0	0	1	0	0	1	2
Vehicle Crime	3	1	2	0	3	1	10
Violence & Sex Offences	7	6	3	9	10	6	41
Totals	30	11	14	27	18	29	129

Crimes March 2025 to February 2026



Crimes per 1000 of Population

