

Don't be a target to would-be thieves!

Don't leave keys visible, or in obvious places — coat pockets and hallway tables are a quick and easy target for thieves.

- If you have a garage, use it to keep your car secure.
- Remember to put your house alarm on when you go out, and leave a light on to deter thieves.
- When leaving a room, always ensure your windows and doors are locked.



Follow us on **Twitter @Humberbeat**



Visit our **Facebook page**
[facebook.com/humberbeat](https://www.facebook.com/humberbeat)



DON'T LET A THIEF USE YOUR STUFF!



REGISTER YOUR PROPERTY TODAY

www.immobilise.com is a **FREE** web-based, secure, property registration system. It is endorsed and searchable by all 43 UK Police Forces. Fill in the online form and create your own account. You will receive an email from immobilise confirming your account name and password.

Every mobile has a unique identity referred to as an IMEI number.

>>TO FIND YOUR IMEI KEY IN *#06#<<

To make your mobile useless to a thief simply contact your service provider should it be lost or stolen and ask them to block the phone. This will prevent your mobile from working on any network.

WANT TO FIND YOUR STOLEN MOBILE AND TAKE A PICTURE OF THE THIEF?

Always use a pin code to protect your mobile phone from any unauthorised use. If you have an iPhone or iPad download the "Find my iPhone, iPad or Mac" using the iTunes site. If you are using an Android phone or laptop, search the web for "Free download-able tracking apps" and download one today.

DON'T LET A THIEF SELL YOUR STUFF!

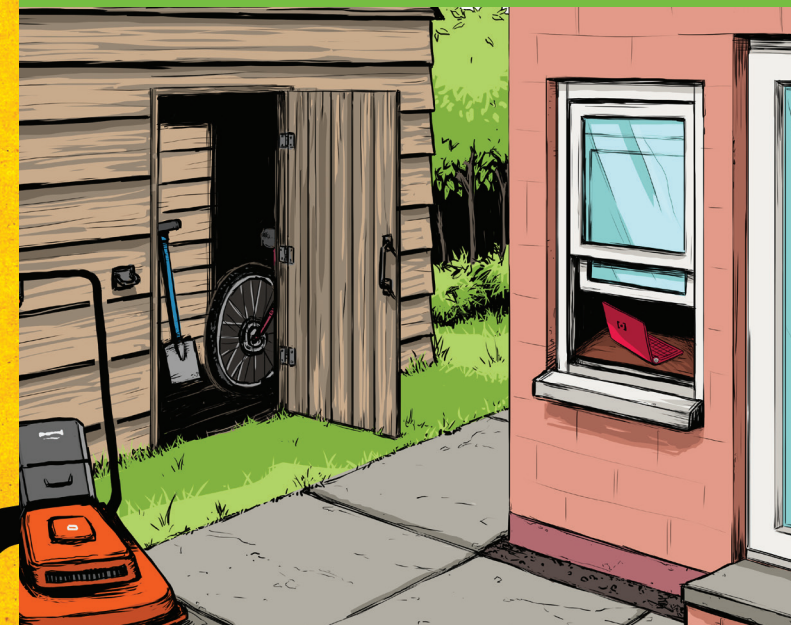
Register your property on www.immobilise.com, and then tick the 'lost or stolen' box. It will then be searchable by registered second hand dealers and Police Forces across the UK.

FOR MORE INFO VISIT:
WWW.IMMOBILISE.COM



WHO'S EYEING UP YOUR HOUSE?

A practical guide to keeping your home secure



Humberside Police

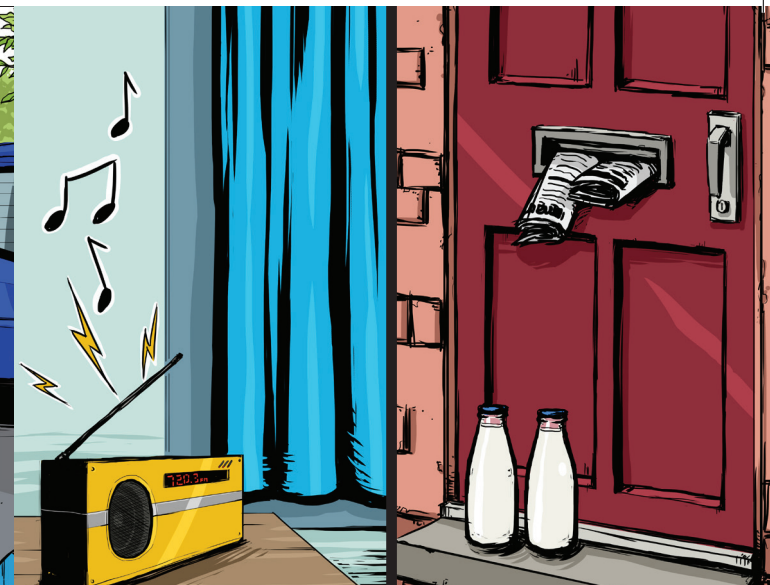
Protecting Communities, Targeting Criminals, Making a Difference

www.humberside.police.uk

Most burglars are not master criminals — they're opportunists. In nearly a third of all burglaries the residents had left windows or a door open when they went out.

Outside

It's not unusual for burglars to use items found in a garden shed to break into your home. Many people underestimate the value of the items they store in their shed, garage or garden. Unfortunately, criminals are fully aware of the value of the goods that some people do store in vulnerable places. The following advice can help to keep your property secure and reduce the chance of you becoming a victim of crime.



Inside

The evidence suggests that once thieves have broken into your home and got away with it, they may be back again in a short space of time unless you do something to prevent it from recurring. If positive action is taken, you will substantially reduce the chance of a repeat visit.



By taking some simple precautions you can make your home a safer place.

- Keep doors and windows locked even when you are at home.
- Make your house appear occupied at all times by using timer switches.
- Hide vehicle keys and don't leave valuables on display.
- Mark valuables with your house number and postcode.
- Laptops and android phones can have free tracking programmes downloaded onto them. Search for "free laptop tracking programmes" on the internet.
- Register your valuables onto www.immobilise.com

Ensure you don't make it easier for someone to break into your home:

- Restrict access to your garden with gates and fences that are difficult to climb over or get through.
- Keep bushes and trees low, burglars hate being on view and use prickly plants to prevent access.
- Use movement activated floodlights and garden lighting to unnerve burglars.
- Secure outbuildings, especially sheds and garages with a BS approved lock.
- Position your shed as near to your home as possible, so that it is clearly visible from your home.
- Lock cycles — even when in garages.
- Record cycle frame numbers and get them security marked.
- Put tools and ladders away, burglars may use them to gain entry.
- Lock lawn mowers to something bulky.
- Get a house alarm (BS: EN50131 standard) with bell boxes to front and rear. Consider extending the system to cover your garage and shed.
- Burglars don't like gravel; it's noisy to walk on.
- Paint your house number and postcode on your garden equipment e.g. lawnmower, strimmer and tools.
- Never leave spare keys hidden in your garden, garage or shed for children or family members — this could invalidate your home insurance.

Going Out

- Lock doors & windows.
- Don't leave keys in door or window locks.
- Leave a light or radio on when out and close curtains (use timer switches).

Going On Holiday

- Cancel milk and newspapers.
- Cut lawn before you go.
- Don't put your home address on luggage labels on your outward journey.
- Ask someone to look after your house, collect post and draw/open curtains.

Don't make it easy for a burglar

The simple tips given in this leaflet are a step in the right direction. There are many ways you can deter a burglar from breaking into your home. **Humberside Police** recommend you protect your home. Keep it safe, keep it locked.

Free crime prevention surveys are available, please **call 101**.

For more crime prevention advice visit www.humberside.police.uk/issues/protecting-your-property