

Bolton Neighbourhood Watch Newsletter



June 2026

Recognising and Reporting Antisocial Behaviour

Antisocial behaviour (ASB) can erode confidence, damage communities, and leave residents feeling unsafe in the very places they should feel most secure. Whether it's persistent noise, harassment, vandalism, or environmental nuisance, early reporting is essential to prevent issues from escalating.

The Neighbourhood Watch Guide to Reporting ASB provides clear, practical advice on how to recognise different types of ASB, how to record incidents effectively, and how to report concerns to the right agencies. It also includes access to online ASB diaries, which help residents track incidents over time and provide strong evidence when seeking support. These resources can be found at Neighbourhood Watch ASB Resources.

How to Recognise, Record and Report ASB in Bolton

Antisocial behaviour affects people differently, but the impact is often the same: stress, disruption, and a reduced sense of safety. Understanding what ASB looks like—and knowing how to respond—empowers residents to take action confidently and appropriately.

Recognising ASB

The Neighbourhood Watch guide outlines common categories of ASB, including:

- Noise nuisance — persistent loud music, shouting, DIY at unreasonable hours. *“Noise from neighbours can annoy, cause stress, and generally affect the quality of life...”*
- Harassment and intimidation — threatening behaviour, verbal abuse, stalking, or targeted intimidation. *“Harassment is unwanted behaviour which you find offensive, or which makes you feel intimidated...”*
- Environmental ASB — fly-tipping, graffiti, dog fouling, vandalism, and antisocial driving. *“Fly tipping, excessive litter and dumped rubbish can be a health hazard...”*

These examples help residents distinguish between everyday disagreements and behaviour that crosses the threshold into ASB.

Recording ASB

Accurate recording is crucial. The guide emphasises keeping a clear log of incidents:

- Dates and times
- What happened
- How it affected you
- Who witnessed it

The ASB 14-Day Diary, available at [Neighbourhood Watch ASB Diaries](#), helps residents build a detailed record that can support investigations by councils, landlords, or police. *“It is important to keep a record of antisocial incidents... it can help others see an established pattern of nuisance over time.”*

Reporting ASB in Bolton

1. Report ASB to Bolton Council



For non-criminal ASB such as noise, neighbour disputes, environmental issues, or housing-related concerns, residents can contact:

 asbreporting@bolton.gov.uk

Providing diary entries, dates, and details of impact will help the council assess and act on your report.

2. Report ASB to Greater Manchester Police

If the behaviour is criminal, threatening, or puts someone at risk, report it to GMP:

 Call 101 for non-emergencies  Online reporting tool: <https://www.gmp.police.uk/ro/report/asb/asb-v3/report-antisocial-behaviour/>

 Call 999 if someone is in immediate danger or a crime is in progress.

Why Early Reporting Matters

The guide stresses that ASB often escalates if ignored. Early action helps:

- Protect vulnerable residents
- Prevent long-term disputes
- Reduce community harm
- Enable agencies to intervene effectively

By recognising ASB, recording it clearly, and reporting it through the right channels, Bolton residents play a vital role in keeping neighbourhoods safe, connected, and resilient.

**COMMUNITY
SAFETY
CHARTER**

ourwatch.org.uk/charter

**TACKLING
CRIMES IN
PUBLIC
SPACES**



#BETHECHANGE



A GUIDE TO

RECOGNISING, RECORDING & REPORTING

ANTISOCIAL BEHAVIOUR

RECOGNISING

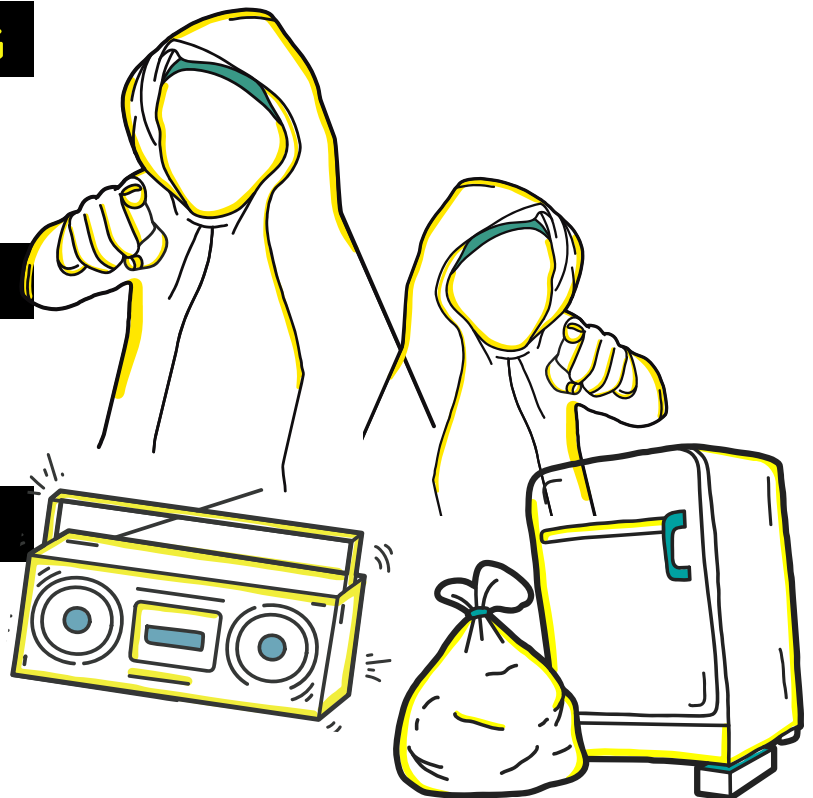
ANTISOCIAL
BEHAVIOUR
PAGES 2 – 5

RECORDING

ANTISOCIAL
BEHAVIOUR
PAGE 6

REPORTING

ANTISOCIAL
BEHAVIOUR
PAGE 7



ourwatch.org.uk

CREATING SAFER, CONNECTED & ACTIVE COMMUNITIES

Neighbourhood Watch Network is a charity registered in England & Wales, CIO no: 1173349



HOW TO RECOGNISE

NEIGHBOUR DISPUTES

Wherever you live, you and your neighbours will inevitably have different values or opinions, different timetables, and different expectations of others.

Disagreements between neighbours are quite common and often easily resolved through good communication. It is important to remember that being a **good neighbour involves compromise**. It is important to resolve disagreements quickly to avoid long-standing disputes with your neighbour, which can be much more challenging to resolve and may need to involve **mediation or The Community Trigger**.

TALK TO YOUR NEIGHBOUR

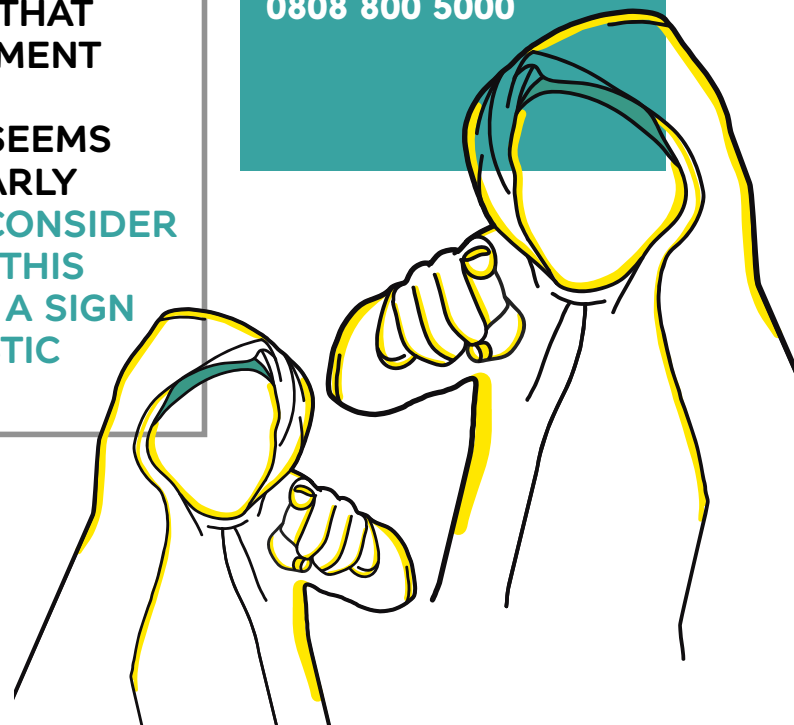
Wherever possible and when it is safe to do so **try talking to your neighbour**. If you decide to approach your neighbour, pick a time when you are feeling calm. **Shouting or being angry will cause more problems**. Think through what you want to say and don't stray from the main problem. Explain what is causing you an issue and why, and **don't jump to conclusions**.

LISTEN

Listen to the person's response as they may have a good reason for their behaviour or it might have been a one-off occasion. Always try to reach a solution that you are both happy with and **walk away if you or the other person is getting angry**.

IF YOU REGULARLY HEAR YOUR NEIGHBOURS SHOUTING AND ARGUING OR YOU FEEL THAT THE ARGUMENT YOU ARE HEARING SEEMS PARTICULARLY VIOLENT, CONSIDER WHETHER THIS COULD BE A SIGN OF DOMESTIC ABUSE.

- If you are concerned for anyone's safety within the household, then **contact the police on 999 in an emergency or 101**
- **Alternatively, call the National Domestic Violence Helpline for free on 0808 2000 247**
- If there are **children involved**, contact your local authority child protection scheme via www.gov.uk or the **NSPCC on 0808 800 5000**



ourwatch.org.uk



HOW TO RECOGNISE

NOISE NUISANCE

Noise from neighbours can annoy, cause stress, and generally affect the quality of life in a residential area.

It can be loud music and parties, lots of **banging** or **DIY in the middle of the night** – anything that you consider unreasonable and is affecting your life. **Don't let a situation get out of control** – if not dealt with quickly, it can escalate and could end up involving the police.

LOUD MUSIC

Loud music is not anti-social behaviour unless it's **persistent or excessive**. One-off parties or events are often acceptable, providing the noise is not excessive and does not result in other antisocial behaviour or criminal activity. But if you think your neighbour's music is often too loud, **goes on for excessively long periods** or they are often having loud parties, any of which are having an adverse effect on you, we advise that you speak to them as this is the

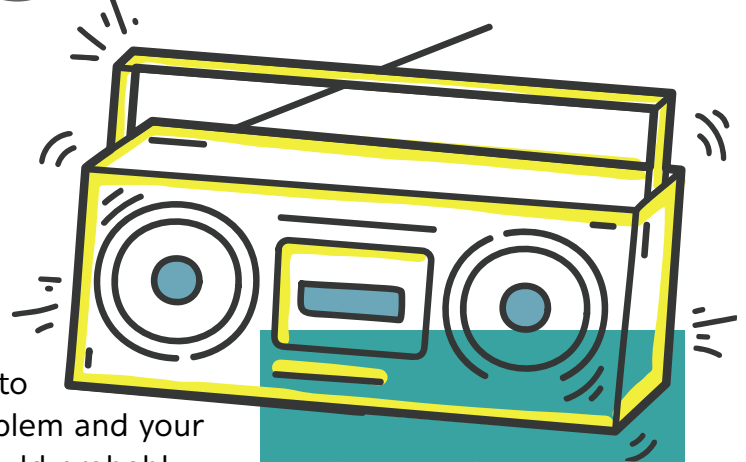
quickest and simplest way to solve the problem and your neighbour would probably prefer that you **speak to them before reporting the noise**.

BANGING

This type of noise can be constant slamming of doors inside a property or when entering and leaving the property as well as constant banging on walls.

DIY AT UNSOCIABLE HOURS

Most people have tasks which need doing around the home, especially if they have just moved in, or are decorating. Many people must work during the day and need to do this DIY in the evenings and on weekends. However, it is unreasonable if noise from your neighbour's DIY project extends into the night disturbing your sleep.



Nuisance neighbours make up 37% of the most common form of antisocial behaviour, with noise disturbance being by far the most reported issue to local authorities, housing associations and the police.

ROWDY BEHAVIOUR

This covers any rowdy behaviour or **general nuisance caused by neighbours**.

REMEMBER:
IT'S USUALLY GOOD TO TALK TO YOUR NEIGHBOURS.
ONE IN THREE PEOPLE HAVE FOUND THAT THIS HAS SOLVED ANY PROBLEMS IMMEDIATELY.

ourwatch.org.uk

HOW TO RECOGNISE



HARASSMENT AND INTIMIDATION

Threatening and **ABUSIVE BEHAVIOUR** can include being violent or aggressive, making threats, controlling someone's behaviour, putting them down, verbally abusing them or pressuring someone to do things they don't feel comfortable with.

HARASSMENT

Harassment is unwanted behaviour which you find offensive, or which makes you feel intimidated or humiliated. It can happen on its own or alongside other forms of discrimination. **It could be spoken, or written words of abuse such as offensive emails, tweets or comments on social networking sites. It could also be unspoken actions such as stalking or repeated intimidating actions.**

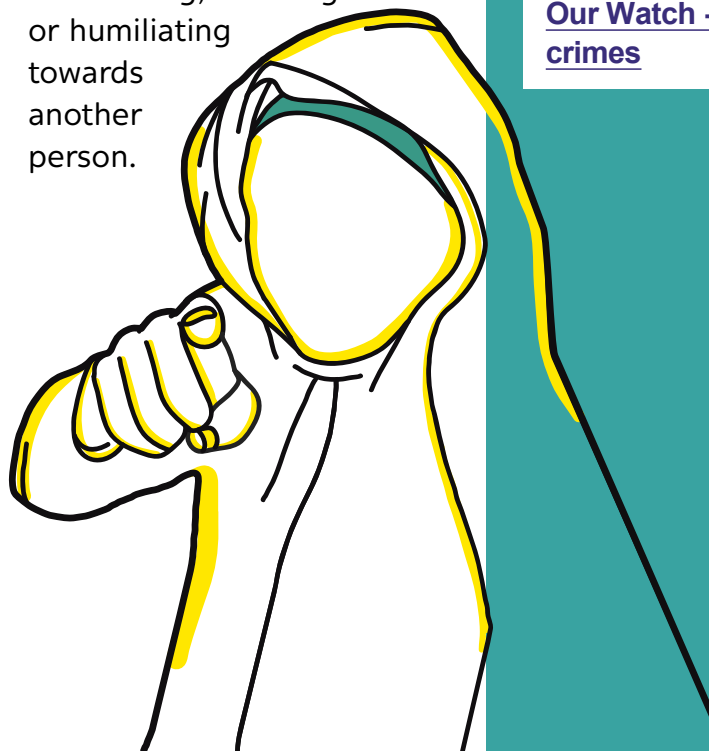
INTIMIDATION

Intimidation is a personalised form of antisocial behaviour, deliberately aimed at particular individuals to make them frightened enough to do what the perpetrator wants them to do. People can experience repeated incidents and problems of intimidation and harassment day after day making them feel constantly fearful.

In some cases, the victim and the perpetrator live close to each other, often as neighbours.

VERBAL ABUSE

Verbal abuse, directing negative comments towards someone, can often cause as much emotional harm as behaviours that are more physical. Examples of verbal abuse are being verbally threatening, insulting or humiliating towards another person.



HATE INCIDENTS

If you or anyone else believes that an incident is targeted at a person because of their ethnic origin, religious belief, sexual orientation, gender identity or disability it is a hate incident.

FIND OUT MORE ON

[Our Watch - Hate crimes](#)

ourwatch.org.uk



HOW TO RECOGNISE

ENVIRONMENTAL ANTISOCIAL BEHAVIOUR

Environment antisocial behaviour is when a person's actions affect the wider environment, such as public spaces or buildings.

Don't just accept that there is graffiti in your neighbourhood, or litter thrown around everywhere, or dog poo in the middle of the street.

Do not accept that Antisocial behaviour is normal.

DUMPING RUBBISH

Fly tipping, excessive litter and dumped rubbish can be a health hazard, not to mention an eyesore. It can cause unpleasant smells, attract pests, and **create a dangerous environment for children**, pets, and wildlife in particular. If the problem is not dealt with quickly, it can lead to an increase in fly-tipping making the area more obviously unpleasant and unsafe.

ANIMAL NUISANCE

This type of nuisance covers any situation where animals are creating a nuisance or people's behaviour associated with people's behaviour associated with caring for animals is deemed

as antisocial. It includes **uncontrolled animals, stray dogs, barking**, fouling and intimidation by an animal.

VANDALISM & DAMAGE TO PROPERTY

Vandalism includes **unauthorised graffiti, light smashing**, removing/bending signage or ornamentation, breaking windows, or other damage to property. **Graffiti is marks, scratching or drawings** made on a surface on a public place, without the property owner's permission.

ANTISOCIAL DRINKING

Drinking in public places and in large groups can intimidate people, cause noise and nuisance and deter other residents from using community spaces.

DRIVING CARELESSLY

Antisocial driving is any activity involving a vehicle which causes alarm and distress. It can be **excessive noise or loud music** coming

from the vehicle, wheel spinning or doing tyre burnouts.

ARSON

Arson is the intentional and malicious **causing of a dangerous fire or explosion** for the purpose of destroying one's own or another's property.

Agencies can use restorative action to deal with offenders in relation graffiti, vandalism, litter and similar offences, which will often include them clearing up the mess.



ourwatch.org.uk

HOW TO RECORD

ANTISOCIAL BEHAVIOUR



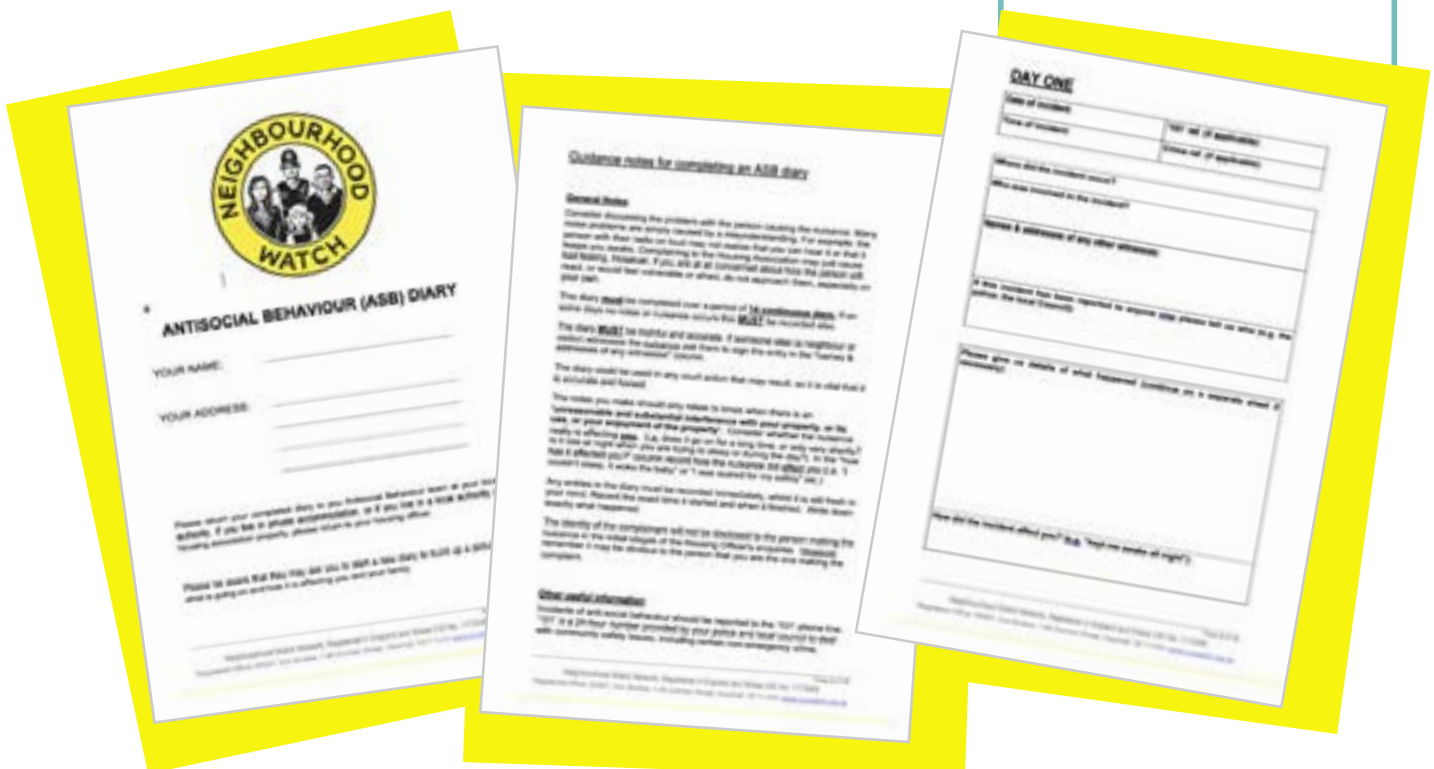
It is important to keep a record of antisocial **incidents** and **behaviours** as this will better help investigation and tackling it. It can also help you to get some perspective on how often it happens. If you decide to take formal action at some stage, it can help others see an established pattern of nuisance over time. Use our **ASB 14-Day Diary** to record events over a period of **14 continuous days**. You can ask someone else

(**a neighbour or visitor**) who has witnessed the nuisance to sign the entry in the **"names & addresses of any witnesses"** column. The completed diary will be useful evidence to accompany any report you make about the antisocial behaviour to the **Local Authority ASB team** or your landlord. If you live in private accommodation, or if you live in a local authority or housing association property, send it to your housing officer.

DON'T FORGET...

TO USE OUR ASB 14-DAY DIARY TO RECORD EVENTS OVER A PERIOD OF 14 CONTINUOUS DAYS.

Visit our website to [download this ASB diary](#).



ourwatch.org.uk

CREATING SAFER, CONNECTED & ACTIVE COMMUNITIES

Neighbourhood Watch Network is a charity registered in England & Wales, CIO no: 1173349

HOW TO REPORT

ANTISOCIAL BEHAVIOUR

Antisocial behaviour can ruin lives and devastate communities. Reporting antisocial behaviour early on is important to prevent it from escalating.

The Local authority, social housing landlords and the police all have powers to deal with antisocial behaviour. It is important that on reporting behaviour, that you detail the **impact that it is having on your health and wellbeing, and can demonstrate a pattern of behaviour.**

IF THE ANTISOCIAL BEHAVIOUR IS NOT SERIOUS, CRIMINAL, OR CAUSING A RISK TO A PERSON:

- You should contact either the **Local Authority** or your **Social Housing Landlord** in the first instance, and if necessary, then report it to the police.
- If you are unsure who to report to [ASB Help](#) provides a useful **Act Now!** online interactive guide that takes you through a series of questions to show you who you should contact.

IF THE ANTISOCIAL BEHAVIOUR IS SERIOUS, CRIMINAL, OR CAUSING A RISK TO A PERSON: FIRST, REPORT IT TO THE POLICE

- If it's an **emergency** and the crime is still taking place, **call 999 and ask for the police.**
- If it's **not an emergency**, call the non-emergency number **101** instead.
- For more ways to report to the police, see our [reporting page](#).

SECOND, CONTACT EITHER THE LOCAL AUTHORITY OR YOUR SOCIAL HOUSING LANDLORD

- If you are a **tenant or a leaseholder** of a social housing landlord, contact them to report the issues. Landlords should take complaints seriously and act professionally. If you ask, they **must publish and provide documents** that set out the types of behaviours they can help to tackle. Your landlord should clarify

USEFUL CONTACTS

MY SPACE

0800 678 1602

VICTIM SUPPORT

0808 808 8141

CITIZENS ADVICE

BUREAU 0800 144 8848

what information they need from you and what help they can provide, and must keep you updated until your case has been closed. They should also **tell you about the help available** from other agencies with different powers and responsibilities, such as your local authority or the police, and support you to approach them. They should also put you in touch with services such as mediation and **Victim Support** if needed.

- If you are in **private rented accommodation or a homeowner**, contact your local authority who will have dedicated personnel that deal with antisocial behaviour.

RESOLVE



ourwatch.org.uk

CREATING SAFER, CONNECTED & ACTIVE COMMUNITIES

Neighbourhood Watch Network is a charity registered in England & Wales, CIO no: 1173349

●👁️ **Join Neighbourhood Watch for FREE!** 👁️●

Neighbourhood Watch is all about community, safety, and looking out for each other. By joining, you'll help reduce crime, share vital information, and make Bolton a safer, stronger place to live.

Together, we can protect our streets, support our neighbours, and build a communities we're proud of.

Sign up today and be the difference!

<https://www.ourwatch.org.uk/joinNW>



Nominations for the 2026 volunteer recognition awards are open until 5 July.

It is so important to us to celebrate the great, often unique, work that our volunteers do. These awards, sponsored by SimpliSafe, recognise individuals whose work goes above and beyond - making a real change in their communities.

We received over 385 nominations last year, so it was a very difficult task to choose the finalists. We have 5 categories, these are:

- Innovation and reach
- Crime prevention
- Community health and wellbeing
- Young volunteer award
- Special recognition award

Innovation and Reach

Strengthening community connections. Do you know a Coordinator or Neighbourhood Watch group who have:

- Overcome challenges to grow their group?
- Thought of a unique way to connect with others
- Created effective new partnerships.
- Considered an innovative way to encourage new members to join or ensure diversity and inclusion shine through.
- Are there people in the group that traditionally would not have joined but did because the group or person helped them feel included?

Crime prevention

Watching out for one another and demonstrating positive actions. Do you know of a Coordinator or Neighbourhood Watch group who have done something different to help prevent crime?

- Do people feel safer from something they were involved in and want to recognise the Coordinator or group for their actions?
- Are there examples of how working with partners helped prevent crime?
- Has the Coordinator or group raised awareness of crimes in different ways to encourage the whole community to be involved?
- This could include working with youth or faith groups, supporting vulnerable people to be more aware of crime, developing inventive ways to reduce crime in the community or fear of crime.

Community health and wellbeing

When we look out for one another, our community connection strengthens and supports us to do activities that bring us together. Let us know about a local Neighbourhood Watch Coordinator or group that:

- Supported their community to look after the environment (this could be arranging a community tidy up, litter pick, planting of communal areas, or anything that has made your community feel looked after)
- Has made you feel supported or demonstrated their care for more vulnerable people in our communities
- Held social events to bring the community together and encouraged positive community values and help you feel better about your area
- Are inclusive and include people of all ages, genders, disabilities, faiths, and ethnicities in activities, showing compassion, empathy, and kindness in what they do

Special recognition award

This category celebrates a Neighbourhood Watch volunteer who has gone above and beyond to make a difference in their neighbourhood or area, potentially over many years. Do you know a volunteer who has:

Committed their time and efforts towards improving their area and the life of their community
Demonstrated our values: friendly, trusted and active in their volunteering with Neighbourhood Watch
Volunteered with Neighbourhood Watch but do not fall into the other award categories, for instance a Cyberhood Watch Ambassador, Association Lead, Membership Support Administrator (MSA)

Young volunteer award

Celebrating young volunteers, aged 16-24, who go the extra mile in their local communities, demonstrating our values and the importance of connection and action. Do you know a young person who:

- Has been volunteering with Neighbourhood Watch and making a positive impact in their community.
- Gives up their time to support their local community (foodbanks, community hubs and groups, homeless, faith groups)
- Held fundraising activities with their school or college or have organised litter picks or other local events.
- You think this young volunteer deserves to be recognised for their hard work and commitment to their community

Eligibility

All nominees must be Neighbourhood Watch volunteers with exception of the young person's category.

How to nominate

Complete the online form through the link below. The deadline for all nominations is 5 July.

[Nominate a volunteer](#)

If you are already part of a Neighbourhood Watch scheme, please consider nominating your coordinator as a thank-you for the many hours they volunteer to support your street and strengthen your community.

If you are not currently in a scheme but would still like to recognise the work being done locally, you can instead nominate Bolton Neighbourhood Watch as a local group. Our volunteers produce this newsletter and work year-round to help build a safer, more secure Bolton.



Your local Neighbourhood Watch is run entirely by volunteers, whether it's your scheme coordinator or association area lead, each one gives up their own time, energy and hearts to make their communities safer and more secure for everybody.

If you've ever been touched by their work or simply want to say "thank you," consider buying us a coffee! Your small gesture helps fuel their big impact.

Buy Us a Coffee – because kindness deserves a refill. Every cup counts. Every sip supports. And every donation reminds our volunteers that their work matters and makes a big difference to your community. ❤️

www.buymeacoffee.com/boltonneighbourhoodwatch

**IT STARTED WITH A BET.
THEN CAME THE DEBT.**

**LOAN SHARKS MAY BE
LURKING IF YOU NEED
MONEY TO KEEP ON
PLAYING.**

Contact Stop Loan Sharks for support:

☎ 0300 555 2222

📞 WhatsApp 07700 102773

🌐 stoploansharks.co.uk

STOP LOAN SHARKS
Intervention . Support . Education

One Community - One Messaging System



**Neighbourhood
Watch**

