



Leicestershire
Police
Protecting our communities

Ashby de la Zouch Newsletter

Issue: January 2026

Your local team



PC Ryan Lang

PCSO Maryann Mason

PS Aaron Bell

PCSO Will Tipper

PC Anthony Allsopp

What matters to you

Our New Beat Priorities:

- 1) **Target retail crime at Flagstaff Island retail premises** - (specifically, the under-reporting of it) by supporting partnership working between them and local authorities (particularly in relation to the use of retail radio/BWV cameras etc).

With the growth of the retail footprint on the outskirts of Ashby towards Flagstaff Island retailers have told us they are concerned they are being targeted by opportunist and organised thieves.

We want to work with these retailers to help prevent and detect crime.

We will work with partner agencies and extend the already utilised retail radio scheme from Ashby Town up to the retail park.

We will ensure there are well published and briefed reporting mechanisms and build relationships with the stores and their loss prevention teams to make Ashby a less attractive target to thieves and to make the retail area safer for everyone.

2) Improving road safety in Ravenstone.

We will increase patrols to monitor speeding and dangerous driving, especially in areas highlighted by residents.

We will engage with the community to identify specific concerns and target our efforts effectively.

We will support traffic calming initiatives and promote safe driving through education and enforcement.

3) School Parking Patrols - Parking problems have been raised around a number of schools within the NN46 area

School parking is a common problem at most schools and you have been reporting this as a concern to you in your community.

We will work with local residents, schools and parent / guardians to do what we can to relieve these parking concerns and provide school safety education for the protection and safety of the local school children.

Somehow, we've blinked and reached the end of January 2026 - the month that feels like a whole year all by itself! Your local officers wanted to check in, share a smile, and thank you for starting the year on such a positive note.

How 2026 Has Started for Us

January has kept us busy (as always!), but we've enjoyed:

- Getting back out on patrol and seeing familiar friendly faces 🙌
- Tackling early-year issues such as ASB, parking concerns, and road safety
- Working with schools as they settle back into the new term
- Supporting community events and neighbourhood priorities

Thank You, Leicestershire

A huge thank you to everyone who has supported us this month — whether by reporting incidents, sharing information, saying hello on patrol, or just being a good neighbour.

Here's to lighter evenings, better weather on the way (we hope!), and a safe, positive start to the rest of 2026.

Stay safe, stay warm, and keep looking out for each other.



What we have done #yousaidwedid



Ashby Community Policing –Monthly Review (January 2026)

Working together for a safer, stronger community

Ashby Policing Update – Arson Concerns on Dunbar Way Estate

Ashby officers have recently been dealing with a series of deliberate fires in a wooded area on the Dunbar Way Estate. These incidents pose a serious risk to public safety, wildlife, and nearby homes, and we are treating them as arson.

Items Found at the Scene

During a search of the affected area, officers located several concerning items, including:

- Aerosol cans
- Flammable materials such as batteries and aftershave
- Knives, screwdrivers and other tools believed to have been used to construct and ignite the fires

The combination of these items raises clear concerns relating to:

- The intentional nature of the fires, given the presence of accelerants
- The risk of serious injury, particularly due to the knives and tools found
- The potential for fires to spread rapidly, especially in wooded areas where wind, dry leaves and dense vegetation can intensify flames
- The impact on nearby residents, who are understandably worried
- The potential for the situation to escalate quickly if not addressed now



At this stage, we suspect those responsible may be local youths engaging in anti-social behaviour. Our priority is preventing anyone from getting hurt. We are asking parents and carers to speak with their children about the seriousness and dangers of fire-setting.

We want to make it clear that we absolutely welcome the fact that young people are spending time outdoors, building dens, and enjoying the fresh air — it's great to see. However, this must not involve starting fires or using dangerous items. What may begin as curiosity or experimentation can quickly develop into a life-threatening situation.

Even though current wet weather reduces the chance of rapid spread, this behaviour is extremely dangerous, and the risks will increase significantly as we approach the warmer, drier months.



Police & LFRS Response

We are actively investigating these incidents. Recent actions include:

- Increased patrols around Dunbar Way
- House-to-house enquiries with affected residents
- Engagement with local schools to ensure children understand the dangers of arson, the legal consequences, and the potential for life-changing injuries
- Joint planning with Leicestershire Fire & Rescue Service (LFRS) for further door-knocks and safety checks near the affected area

How You Can Help

If you have any information, no matter how small, please contact us via:

- 101
- Online reporting at the Leicestershire Police website
- 999 in an emergency

Your information could help prevent further incidents and protect the safety of the whole community.

Think Before You Drink: Police Warning to Motorists

On Monday 26th January, officers on patrol were called to an incident on Market Street following concerns raised by local street security staff. Thanks to their quick actions and the prompt attendance of officers, a driver was stopped and subsequently arrested on suspicion of drink driving.

Market Street is a popular place for socialising, and we understand that many people enjoy visiting the pubs and restaurants—there are plenty of pros (and of course a few cons) to popping over for a drink or two. However, it is vital to remember that drinking and driving must never go together.

⚠️ WARNING TO DRINK DRIVERS – ASHBY ⚠️

Driving after drinking is dangerous, illegal, and will not be tolerated.

Recent concerns in the Market Street area have again shown how quickly drink-driving behaviour can put lives at risk. The arrest made this week serves as a strong reminder:

👉 If you choose to drink and drive, you are putting lives at risk — pedestrians, families, and other road users.

🚗 Drink driving will be reported and will be dealt with.

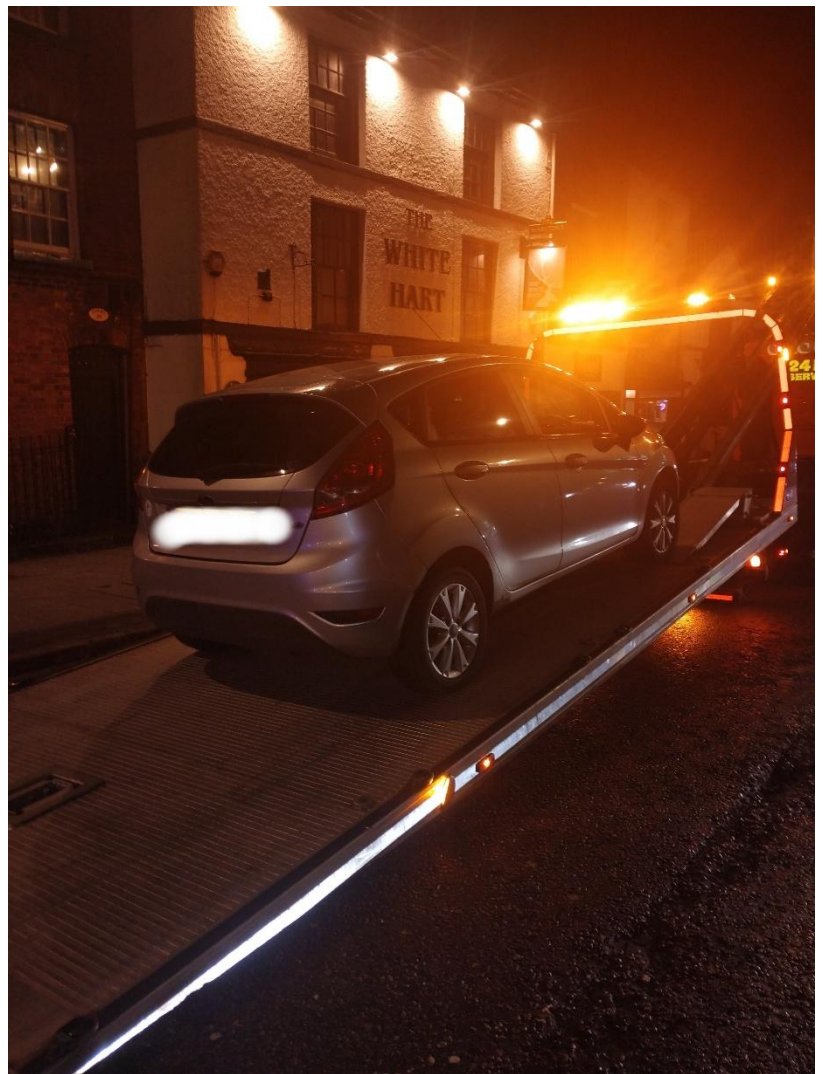
🚓 Losing your licence is the *least* of the consequences.

⚖️ The harm caused by serious injury or death is irreversible.

If you are drinking:

- ✅ Don't drive
- ✅ Plan a lift
- ✅ Use a taxi or public transport

Make the right choice. One decision can change everything.



Beat Priority – School Parking Patrol Update

As part of our current beat priorities, officers from the Ashby Neighbourhood Policing Team have been carrying out high-visibility parking patrols around several local schools following concerns raised by residents.

These patrols are in place to support road safety, pedestrian access, and community reassurance during busy drop-off and pick-up times.

Woodstone Primary School – Millers Walk

On the afternoon of Wednesday 28th January, officers patrolled around Woodstone Primary School, focusing particularly on Millers Walk, after receiving reports of:

- Vehicles blocking or partially blocking driveways
- Cars parking on the pavement, reducing space for pedestrians, prams, mobility scooters and wheelchairs
- Increased congestion during school start and finish times



We are pleased to report that no issues were identified during today's patrol. Parking was considerate and allowed clear access for both pedestrians and residents. We would like to thank parents, carers, and visitors for their cooperation.

We kindly ask that this considerate parking continues. Please:

- Keep pavements clear
- Avoid blocking driveways
- Be mindful of residents who rely on safe access to and from their homes

Your continued support makes a real difference in keeping everyone safe.



Parking Patrol – Flora Grove, Ashby

On Monday 26th January, A further patrol was conducted on Flora Grove, where Officer 6633 was accompanied by the Head Teacher from Ashby School. This followed concerns raised regarding student parking in the area.

During the patrol, 27 vehicles were observed. Each was assessed, and none were found to be parked dangerously or obstructively, or in any way that restricted access for residents, pedestrians or emergency services.

We would like to thank parents, carers and local residents for the considerate parking observed. Responsible parking helps keep the area accessible and safe for everyone.



Ongoing Work

These patrols form part of our regular neighbourhood policing activity. We will continue to visit schools across the Ashby area over the coming weeks to support:

- Road safety
- Pedestrian access
- Community reassurance
- Early identification of any issues

If concerns arise, please continue to report them to us so we can address them proactively as part of our beat priorities.

Thank you for your continued cooperation and support.

BEAT SURGERIES, MEETINGS AND EVENTS FOR FEBRUARY 2026

- 03/02/2026 14:00-15:30 Ridgway Road Community Hub, Ashby, LE65 2PL
- 05/01/2026 10:00-12:00 Pathways, Holy Trinity Church, Kilwardby St, Ashby, LE65 2FR
- 12/02/2026 10:00-12:00 Sanctuary Housing Association, Stowe Close, Ashby, LE65 2NY
- 25/02/2026 17:30-18:30 Tesco Extra, Resolution Rd, Ashby, LE65 1TE

 **Stay connected – Follow us on social media or speak to your local officers to share your concerns or ideas.**



Neighbourhood Link is a community messaging service from Leicestershire Police that provides news and

Information about policing activity or initiatives, crime prevention advice as well as major incidents affecting your area.

Through this service you can receive messages from your local Neighbourhood Policing Team, local police or, in the event of a major incident or event affecting the whole of Leicestershire, from a partnership of agencies known as the Local Resilience Forum.

In order to receive messages, you will need to register your details. Registration is free and simple to follow.

- Sign up to Neighbourhood Link <https://www.neighbourhoodlink.co.uk/>
- If you are already registered, you can amend your details
- Request a reminder if you have forgotten your username or password
- You can unsubscribe from the service at any time

Please click the link to show the latest available crime figures in the Ashby Beat Area, beat team information, policing priorities and meetings and events.

<https://www.police.uk/pu/your-area/leicestershire-police/ashby/>