

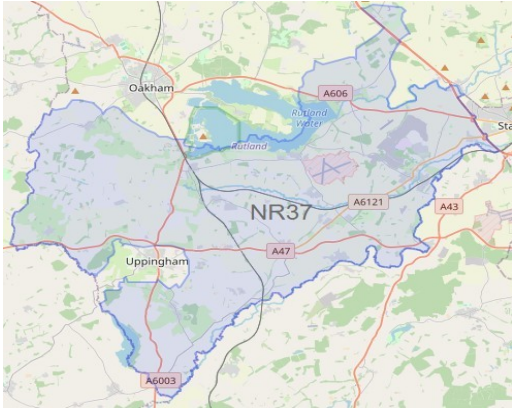


Leicestershire  
**Police**  
Protecting our communities

# Rutland South Newsletter

September 2025

Welcome to your Rutland Rural South police e-newsletter.



## What matters to you

We have listened to you and the concerns that have been raised through surveys, community consultations, and ongoing crime pattern analysis. With this in mind we have made the following our priorities that our efforts will be focused on this quarter:

### Road Safety:

You said: Speeding vehicles on Rutland roads is a priority you want us to address across the county, but in particular the A47 corridor and it's tributaries.

What we are going to do: As before we will provide frequent overt policing to the affected areas with marked vehicle patrols, and through the use of handheld speed monitoring guns. We will also continue work with our partners in road safety in order to highlight areas of concern and request deployment of resources, and continue education and information about responsible use of the roads via our social media channels.

### Anti Social Behaviour:

You said: Specific issues of ASB concerning individuals in the community, 'nuisance neighbours' and irresponsible dog ownership/walking is an area you want us to focus on.

What we are going to do: Working with our partners we will support investigations into people causing harm in our communities, and take the lead where overt criminality is involved. Through our social media channels we will continue to promote avenues to reporting issues to the most appropriate agency.

### Vehicle Crime:

You said: The issue of theft of and from vehicles, and vehicles being used to commit other offences has been highlighted as a priority you want us to work on.

What we are going to do: Overt patrols of affected areas will continue, along with robust policing of suspected offenders and persons of note in line with our intelligence picture of the problem. We will continue to promote proactive ways to keep property

## What we have done #yousaidwedid

Another busy month across Rutland!

Alongside all of our other work, we have been making efforts into working on our road safety priority. Whilst this is a beat issue for South Rutland, it affects the whole of the county, and we have been working as a team to enforce where we can, through our 'Fatal 4' operation in Oakham Town.

We have also been out responding to incidents across our road network, and have dealt with a number of high risk accidents.

We also seek to engage and educate, and along with our partners attended a very successful multi agency event at Kendrew Barracks, promoting all aspects of road safety

We have also had a number of anti social warnings issued to motorists for their manner of driving to address anti social behaviour concerns.

So another busy month, but some positive outcomes and engagements. We will always try and help where we can, so please do reach out if you need us...



September 2025

## Neighbourhood Link

We continue to encourage local residents to have their say through Neighbourhood Link surveys, our aim is to keep all residents that have signed up to this aware of issues happening in Rutland.

Our policing priorities are set every quarter following returns of Neighbourhood Link surveys, along with crime pattern analysis data and issues highlighted by of our professional partners.

The more results we have from surveys, the better informed we are as to where to target resources.

## Neighbourhood Link Community Messaging Service

Receive the latest news,  
updates and events information  
direct from the police



Leicestershire  
**Police**  
Neighbourhood Link



### Benefits of signing up:

- ▶ Keep updated about police activity in your local area
- ▶ A trusted source of the latest crime reduction tips and advice
- ▶ Share your views and have your say through our surveys
- ▶ Choose to receive updates from partner organisations like Action Fraud

### Remember:

- ▶ It's fast to register, and free to use
- ▶ It's a secure system. We'll never share your details without your consent
- ▶ You can unsubscribe at any time
- ▶ If you're already signed up, get local family and friends involved

**Sign up at** [www.neighbourhoodlink.co.uk](http://www.neighbourhoodlink.co.uk)



September 2025

## Noteworthy crimes

### VEHICLE CRIME

Ketton: Theft from motor vehicle

Ketton: Damage to motor vehicle

Lyddington: Theft of motor vehicle

### BURGLARY

Ketton: Dwelling burglary

### THEFT

Manton (Rutland Nursery): Shoplifting

North Luffenham: Theft of cabling

## Crime trends and Prevention advice

Crime has dropped this month following a spike in offences last month. We have seen a significant incident of theft of cabling which has caused a lot of disruption to local services, but it is encouraging that burglaries are down for the month of September.

As the summer draws to a close and we see darker and earlier nights, we all need to remain vigilant to the risk of items being targeted and stolen, and take reasonable steps to protect our properties.

If you keep vehicles and trailers on commercial or rural sites, try and park where they could not be reasonably or quickly removed. The more obstacles in the way, the less attractive your equipment is.

Give consideration to floodlights and CCTV systems to deter criminality - thieves don't like to be seen at work, anything that exposes or helps to identify them is worth looking into.

At home, always consider where your keys are kept in the house. Most criminals entering properties for keys will look in the obvious places in hallways and kitchens etc, so think about keeping your keys in the more ambiguous areas.

It is also worth looking at keeping car keys in 'Faraday pouches'. Technology is such that thieves can detect and copy the signal that your keys transmit to the car and enter it without the need for a physical key. A Faraday pouch blocks the signal the key transmits, making this impossible. We have seen technology utilised in thefts within this reporting period.

These simple pouches are available online through the usual outlets. Some Police stations also have a limited supply available to purchase directly.

Our villages whilst beautiful, are VERY dark at night so please remain vigilant. Ensure your doors and windows are always locked and leave lights on if you go out.

Rural locations including building sites and Farms are often targeted as their plant equipment are highly desired commodities due to demand exceeding world-wide supply. We continue to run operations for rural crime with officers out patrolling where possible.







Leicestershire  
**Police**  
Protecting our communities

# Rutland South Newsletter

September 2025

## Dates for your diary

### BEAT ENGAGEMENTS:

Saturday 11/10:

Ketton Parish Council 11-12

Monday 13/10:

Empingham Methodist Church 2:30-3:30

Sunday 19/10:

Ketton Parish Council 11-12

## Follow us & Contact info

Follow us on Facebook - @RutlandPolice

Contact the team directly via email:

Email: PC 2157 Edd McKinnon:

[Edward.mckinnon@leics.police.uk](mailto:Edward.mckinnon@leics.police.uk)

Email: PCSO 6613 Andy Wylie:

[Andy.wylie@leics.police.uk](mailto:Andy.wylie@leics.police.uk)



**The next edition will be out soon!**