

# NORBITON

## NEWSLETTER SUMMER -2026



**Norbiton Safer  
Neighborhood Team**  
Sergeant Jon Edwards PC  
Moses Downing  
PC Josh Bridges  
PC Rorke Minors  
PCSO Geoffrey Jjingo

Hello Resident,

Welcome to summer edition of the Norbiton Safer Neighborhoods Newsletter. We hope all our residents are effectively managing the extreme heat and taking care of personal hydration, outdoor safety and looking out for vulnerable individuals.

The ongoing work of our police officers with daily arrest car is continuing to yield good results. It keeps the outstanding number of offenders on their toes. Many thanks for all of your ongoing hard work on the arrest car and keeping our offender management numbers low.

Our Local Police Teams are no longer responsible for the speed watch events on the ward. I call upon residents who want a road speed watch on their road to send out an email message to: [communityroadwatchmet.police.uk](mailto:communityroadwatchmet.police.uk)

### **Ward Panel Priorities**

Reported crimes for shop lifting in March and April were 5 & 4 in May. We have encouraged the shop owners to report incidences and to register with AUROR( <https://www.auror.co>) a retail crime intelligence platform, built for retailers and law enforcement making stores and the communities safer.

#### **Drug Misuse and ASB**

The number of reported ASB issues have significantly decreased. May had the highest total of 5. In May 4 and April 2 for ASB Nuisance . Only 1 report of ASB personal for each month in April, May & June. 4 drug offenses reported in March and 1 in April

### **Good News Stories**

Register your valuable items at [www.immobilise.com](http://www.immobilise.com) for a chance . Immobilise helps police identify the owners of recovered property thousands of times every day.

Property updates you make are immediately available to police nationally, playing an important role in fighting property crime. Combat the sale of stolen gadgets and valuables by alerting the second-hand trade and the publicly checkable stolen goods database, CheckMEND, if an item goes missing. Simplify insurance claims and police reports with certificates of ownership. Or, if you need a loss report number for insurance purposes, visit Report My Loss. Immobilise is a police approved Secured by Design initiative and ISO 27001 certified to ensure your data is protected to the highest standards.

In February 2026, the Met launched the 'build' phase of the Clear Hold Build project that began in December 2023 to tackle drug use/supply, violence, robbery, shoplifting and anti-social behavior.

**Clear:** Police and partners remove the most harmful offenders, disrupt criminal networks, and deal with immediate threats.

**Hold:** Agencies work closely with residents to maintain safety, support vulnerable people, and stabilise the area.

**Build:** The community, council, and police work together on long-term improvements, investment, youth opportunities, and local pride.

The coordinated strategic approach has significantly reduced the drug related ASB on the ward.

150,000 members, 73,500 surveys and 23,700 messages received – one year on from launch of our community crime-fighting tool, Met Engage, and it's become an embedded and useful resource that is supporting neighborhood policing. Met Engage is a two-way Online platform that allows residents to highlight local priorities and pinpoint any crime hot spots, giving us a clearer picture of where issues are happening and what matters most to them. It also allows neighborhood teams to update residents about what they are doing to tackle these issues and influence their local policing plans. Met Engage runs on a platform called Neighborhood Alert and has created a positive impact on community relations. Getting feedback from locals and using the insight to focus policing plans on real concerns Increasing community awareness and vigilance by being able to send out messages on live issues and concerns Encouraging people to share information and stay engaged by providing a two-way system to communicate easily We continue engaging locally and encouraging sign ups – the more people are signed up the more helpful the platform becomes.

## COMMUNITY ENGAGEMENT EVENTS

### CUPPA WIT A COPPER COMMUNITY ENGAGEMENT EVENT

We will be holding a cuppa with a copper event on Monday 20th July 2026 for one hour between 10:30 - 11:30 Hours  
Please come and meet your local officers at the River Cafe 33 Cambridge Road KT1 3NQ to discuss local policing issues, share any anti social or community safety concerns and receive crime prevention advice.

TENNIS APRIL - MAY  
JUNIOR GROUP TENNIS  
SATURDAY  
09:30 - 10:30 Hours 5-8 years  
10:30 - 11:30 Hours 8-12 years  
ADULT GROUP TENNIS  
PAYG £20 /90 Minutes -  
SOCIAL/ COACHING  
Tuesday 18:30-20:00 Hours  
Friday 10:00-11:30 Hours  
Sunday 15:00-16:30 Hours  
Contact Zuzana the coach for  
more information. Tel:  
07561343753  
Email: sloeng111@gmail.com



Left in the background youths attending the Chelsea Football Premier League Kicks for 12-18 years at the Chelsea football Club on Wednesday 6th May 2026. For more information about the program you can email: [foundation.enquiries@chelseaafc.com](mailto:foundation.enquiries@chelseaafc.com) All football games are for free. The initiative aims to promote healthy lifestyles, reduce anti-social behavior and create positive community pathways.



Above PCSO Geoffrey Jjingo & PCSO Matthew Beachamp holding a crime prevention stall at the Searchlight Community Centre and meeting members of day service for adults with support needs on Monday 22nd June

The New Malden Farmers Market runs on the first Saturday of every month on the New Malden High Street KT3 4EU typically from 09:00-14:00 Hours. The market offers fresh local produce. Next Event will take place on Saturday 04th July 2026.



Above left Crime Prevention Stall on 23 May 2026 & right Move Well, Live Well Event on 9th April 2026. Both engagement events were held at St John's New Malden Church KT3 3RX. The move Well Event was well attended and involved Tai Chi Exercises



Above left & right Bike Marking Events in front of Norbiton Train Station Below Chair Exercises at the Queen Mary Hall Cambridge Gardens on 10th June 2026 followed by presentations about community safety and other local services



## WELLBEING DAYS AT QUEEN MARY HALL CAMBRIDGE GARDENS



**WELLBEING DAYS**

**SUPPORT INCLUDES**

- HEALTH CHECKS | FOOT CARE FROM AUG
- HAIRCUTS | CLOTHES | TOILETRIES
- BENEFITS & QUIT SMOKING ADVICE
- EMPLOYMENT SUPPORT | BIKE REPAIRS
- SOUP, CAKE & HOT / COLD DRINKS

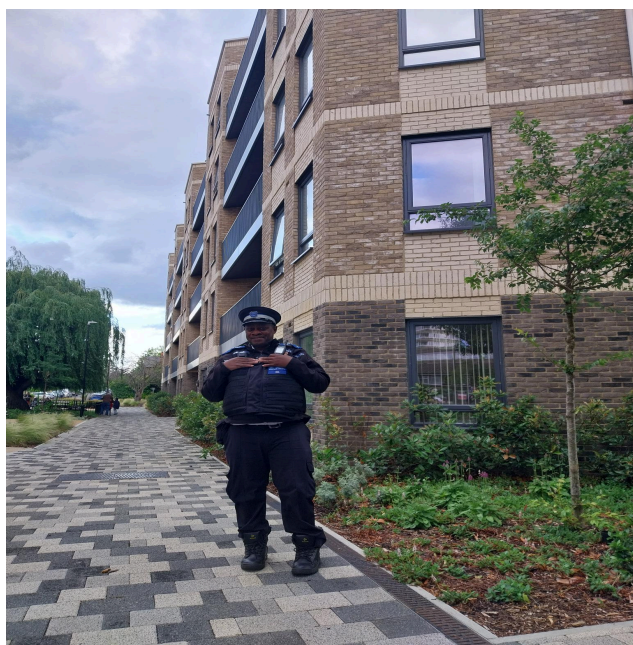
**FAMILY FUN THIS AUGUST**

- FACE PAINTING | GAMES & CRAFTS
- ICE LOLLIES | CHILDREN'S DENTIST
- BIKE SECURITY MARKING

**FRIDAY 11AM 2PM**  
**3 JULY | 7 AUG | 4 SEPT**  
QUEEN MARY HALL CAMBRIDGE GARDENS KT1 3NJ

★ ★ **FREE EVENT** ★ ★ **ALL WELCOME** ★ ★

Above left Wellbeing day on 1st May 2026. The Police SNT Team will attend the upcoming well being days at Queen Mary Hall KT1 3NJ to conduct Bike Security Marking commencing on 3rd July 2026.



Above PCSO Geoffrey JJINGO conducting high visibility foot patrols on the Cambridge Road Estate. Right on 21st May at the junction of Somerset Road and Washington Road. Left on 8th June as new residents of Daisy Court were moving in to the newly built flats.

### Upcoming Events for July 2026

You are invited to Sisterhood Sanctuary on Thursdays (term-time only) at the Queen Mary Hall Cambridge Gardens KT1 3NJ. Join other women and girls (12+) for a free afternoon of pampering and creative fun. There will be nail painting, arts and crafts, refreshments & snacks.

FULHAM'S Premier League Kicks programme offers free weekly football sessions for boys and girls aged 8 to 12 on Wednesdays 16:30 - 17:45 Hours at YMCA DICKERAGE Sports and Community Centre KT3 3EQ. To book now visit: [www.fulhamkicks.com](http://www.fulhamkicks.com)

Free football coaching with DJR! Community drop-in sessions FRIDAYS 17:00 - 18:00 Hours (ages 6 - 9) & 18:00 - 19:00 Hours (Ages 10+ YRS) at YMCA, DICKERAGE PARK NEW MALDEN. All ages are welcome, FA Qualified Coaches DBS and Insured. Bring suitable footwear, shin pads and water.

### **Upcoming Bike Marking Events**

The next Bike Marking Event will be held on Friday 3rd July 2026 between 11:00 - 12:00 Hours in front of Queen Mary Hall Cambridge Gardens KT1 3NJ.

Another Bike Marking Event will be held on Wednesday 15th July 2025 between 15:00 - 16:00 Hours in front of Norbiton Train Station KT2 7AZ

### **Street a Week**

We continue to conduct the 'street-a week' initiative, by asking our residents to sign up to the Met Engage platform and participating in a survey. Below are streets and homes whose residents have been signed up to Met Engage recently

VICENT ROAD ; PIPER ROAD; SHELFORD BLOCK; DUXFORD BLOCK; CAMBRIDGE ROAD; WILLOW COURT; LIME COURT; MAPLE COURT

## **How to contact us?**

**-Emails to the SNT mailbox:**

**Norbiton.365Group@met.police.uk**

**(This email is not for reporting a crime)**

**It is checked when the Team are on duty.**

**- Via Twitter/X @MPSNorbiton**

## **REPORT CRIME**

- Via dialling 999 in an emergency and 101 for non – emergency crimes**
- You can report crime online on MET-police website <https://www.met.police.uk/ro/report/ocr/af/how-to-report-a-crime/>**
- Feel free to come to Kingston Police station and report a crime. Opening Hours are now 10:00 - 22:00 Hours**