

ROBBERY: WHAT TO DO IF IT HAPPENS AND HOW TO GET SUPPORT

Robbery is when force is used or threatened to steal items. It is a serious crime and should be reported to the police.

Reporting crime is the first step in catching those responsible and keeping you and your friends safe.




Supported by

VS **VICTIM
SUPPORT**
CHILDREN & YOUNG PEOPLE



**METROPOLITAN
POLICE**

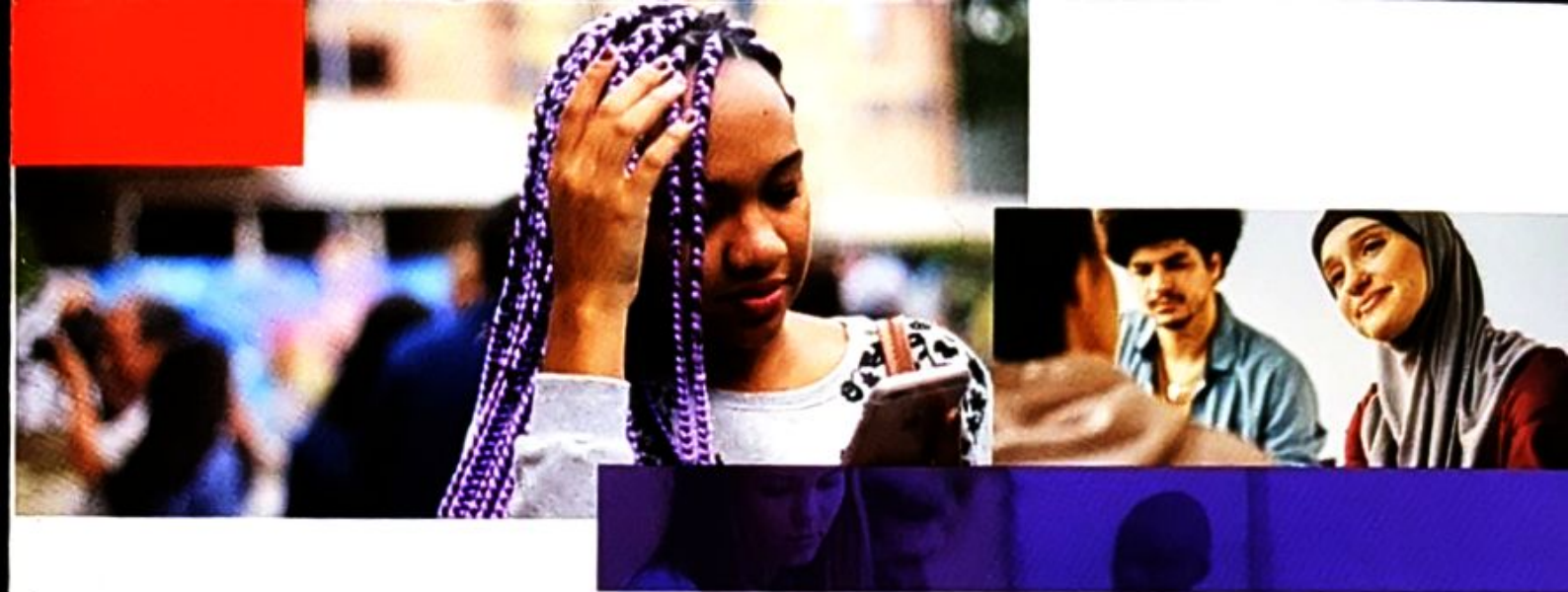


Thieves could be anywhere when you are out and about. Keeping your phone and other valuables hidden may make you less of a likely target for thieves.

Remember, it is better to hand items over than risk your own safety.

Although following crime prevention advice can help reduce your chances of being robbed, it may still happen. It can be a frightening experience and leave you feeling worried afterwards.





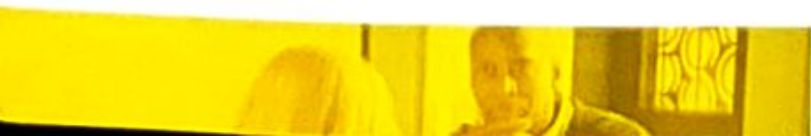
What to do if you have been robbed?

If a robbery has just happened, call the police on **999**, as soon as possible for an emergency response.

Where can I get support if I have experienced a crime?

Victim Support is an independent charity with a specialist team who help young people cope with the impact and effects of crime.

- Call and speak to our trained staff any time of day on **08 08 16 89 111**
- Chat online with the live chat support service, available 24 hours a day



Support for witnesses

If you have seen or heard about a crime, or been the victim of one, you may be asked to talk about what happened at court.

This is called giving evidence and by doing this you will be a witness.

Lots of young people go to court as witnesses, so don't feel that you're alone. Remember, you haven't done anything wrong, and you will have support.

As a young victim or witness, you should automatically be entitled to special measures. Special measures can include giving evidence from behind a screen or giving evidence in private with no press or public.

Victim Support can guide you through the process so you feel prepared.



Scan the code or visit [victimsupport.org.uk/children-and-young-people](https://www.victimsupport.org.uk/children-and-young-people) to find out more about the support available.

