

Dear residents,
Thank you for taking a moment to read this update on some of the work taking place across Brent, Harrow and Barnet during January. We've seen strong partnership working and determined local policing that's making a real difference everyday. This month's mentions focus on the outcomes residents tell us matter most: tackling repeat shoplifting that harms local businesses, disrupting organised crime, and responding to anti-social behaviour.

Luke Williams
Detective Chief Superintendent
NW BCU Commander



Stay connected: sign up to Met Engage
Sign up at: www.MetEngage.co.uk

BRENT

Cannabis farm dismantled.

Officers from the Kilburn Safer Neighbourhoods Team, working with Brent Council, located, secured and seized a large quantity of cannabis plants being cultivated across multiple floors/flats in a residential building. Estimated value was around £3M+, now seized for destruction - a significant impact on local organised crime and drug supply across the area and wider London.



Persistence pays: wanted suspect located and arrested

Having spoken with a member of the public, officers became suspicious about a person's previous history and further research identified he was wanted for a sexual offence from two years prior. Officers then went looking for him covertly over a number of days, before tracking him down and arresting him.

Consistent neighbourhood presence, good information gathering, and determined follow-up are essential to protecting victims and keeping our communities safe.



BARNET

Over recent weeks, Barnet neighbourhood policing teams ran a focused operation across North Barnet - working closely with stores from Mill Hill through to East Barnet. The results were significant:

48 People Arrested

98 Offences of Shoplifting Charged: (Totaling a value of £37,260)

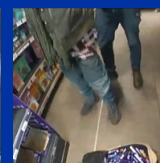
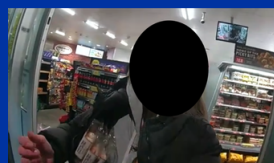
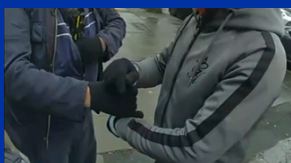
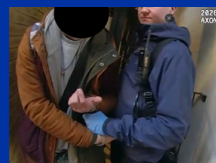
2 Offences of Burglary Charged

4 Offences of Possession of Drugs Charged

15 Breaches of Orders and Recalls to Prison

Your input matters - if you run a shop or work in retail:

- Report shoplifting and repeat offenders - even where the value is low. Patterns matter.
- Keep CCTV available and preserve key images/time stamps for reports.
- If safe, note descriptions, direction of travel, and whether a vehicle is involved.



Anti-social behaviour: Persistent anti-social behaviour at Observer Close, NW9 was causing distress to residents. Working with partners and using legal powers, the local neighbourhood team progressed a robust closure order application that prevents people entering the premises.

At court, three closure orders were granted and our teams enforced them. This is neighbourhood problem-solving in action: gathering evidence, working with housing and the council, and using the right powers to make our communities a better place to live.

Series of Burglaries Solved in Barnet

Two suspects have been arrested and charged after a series of three linked burglaries in Barnet. Officers detained them on 24 January near a recently targeted home and recovered stolen jewellery, watches, and a vehicle on cloned plates. CCTV enquiries connected them to two further burglaries. Both remain in custody awaiting trial.

HARROW

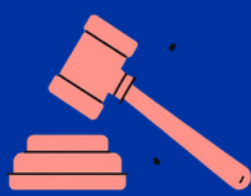
10 Year Sentence After Officers Safeguard Vulnerable Pinner Resident

Harrow officers in Pinner safeguarded a vulnerable woman who suffered long term domestic abuse and cuckooing. Working with partners, she was relocated to safety, and the offender was charged. At Isleworth Crown Court, he received six years in custody plus four on licence. We encourage anyone experiencing abuse to seek help.



Criminal Behaviour Order Issued to Protect Harrow Community

A 25 year old man received a two year Criminal Behaviour Order following evidence of ongoing criminal and antisocial behaviour. The order includes exclusion zones, association bans, limits on mobile phones, and restrictions on drug related items. CBOs help disrupt gang activity and protect vulnerable residents. Breaches can lead to arrest.



Keep Getting Local Updates - Join Met Engage

More than 20,000 residents are already signed up to **Met Engage**, receiving regular updates about local policing, events, safety advice and community activity.

If you'd like to keep receiving updates like this newsletter, please take a moment to sign up at MetEngage.co.uk

